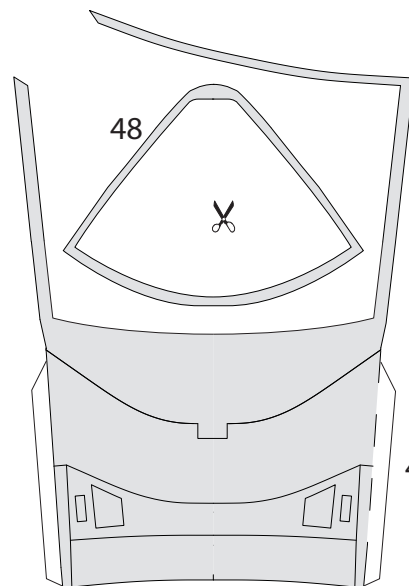
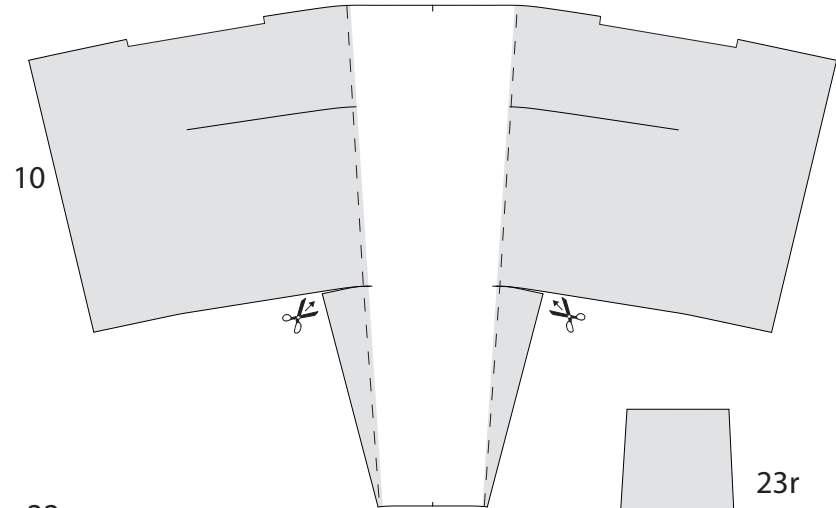
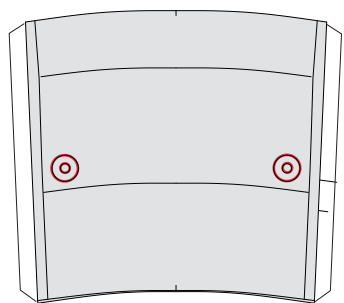


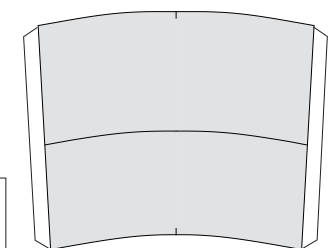
9s



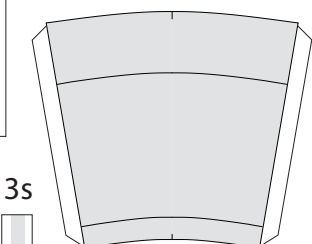
PRINT THIS PAGE ON 80-100# (180-200 g/m²) CARD STOCK



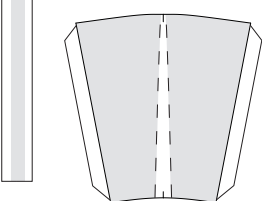
10s



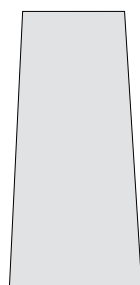
12s



41



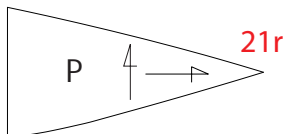
40



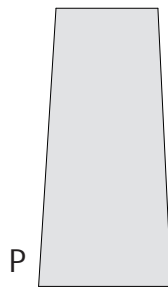
23l L



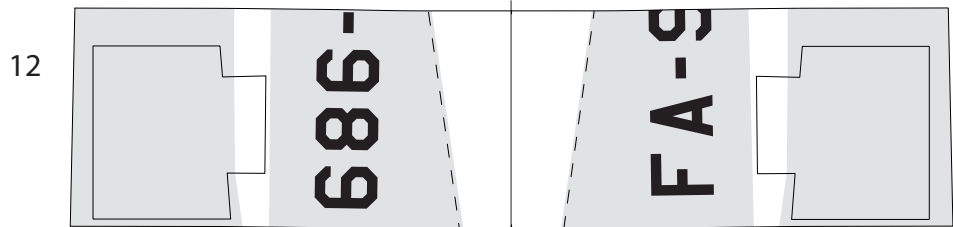
22r



21r



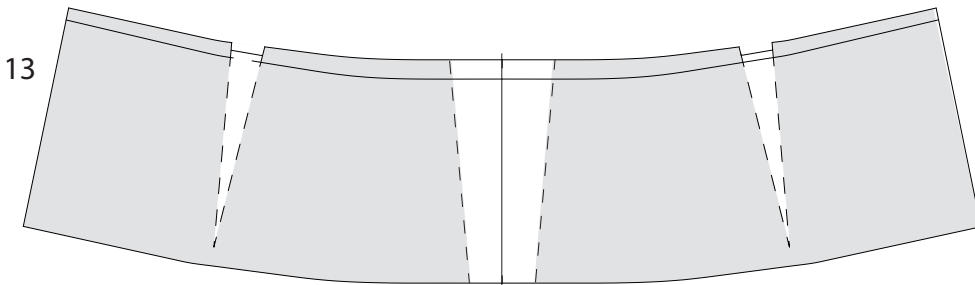
23r



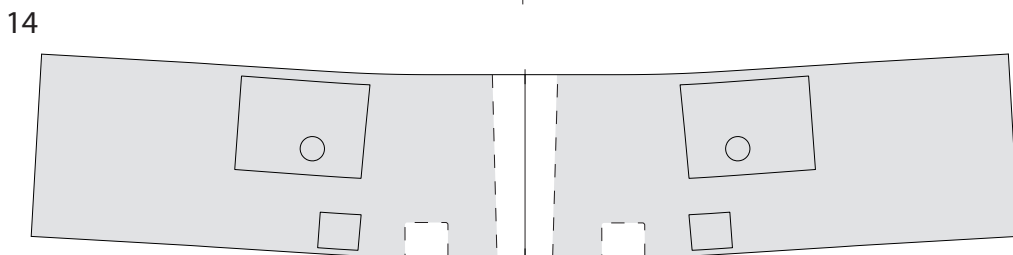
12



13s



13

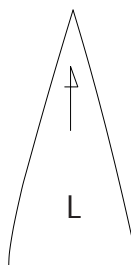


14

14s

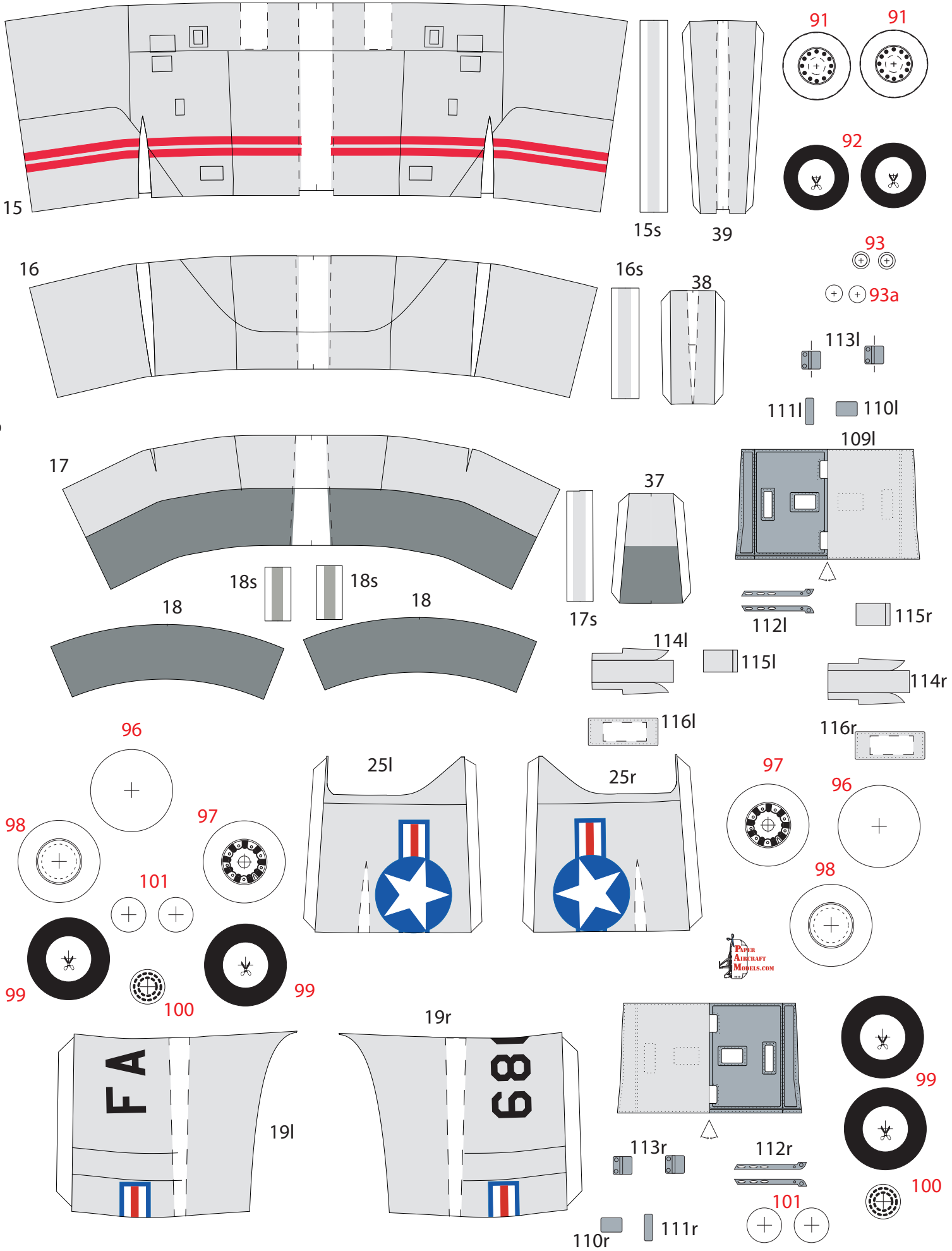


22l



21l

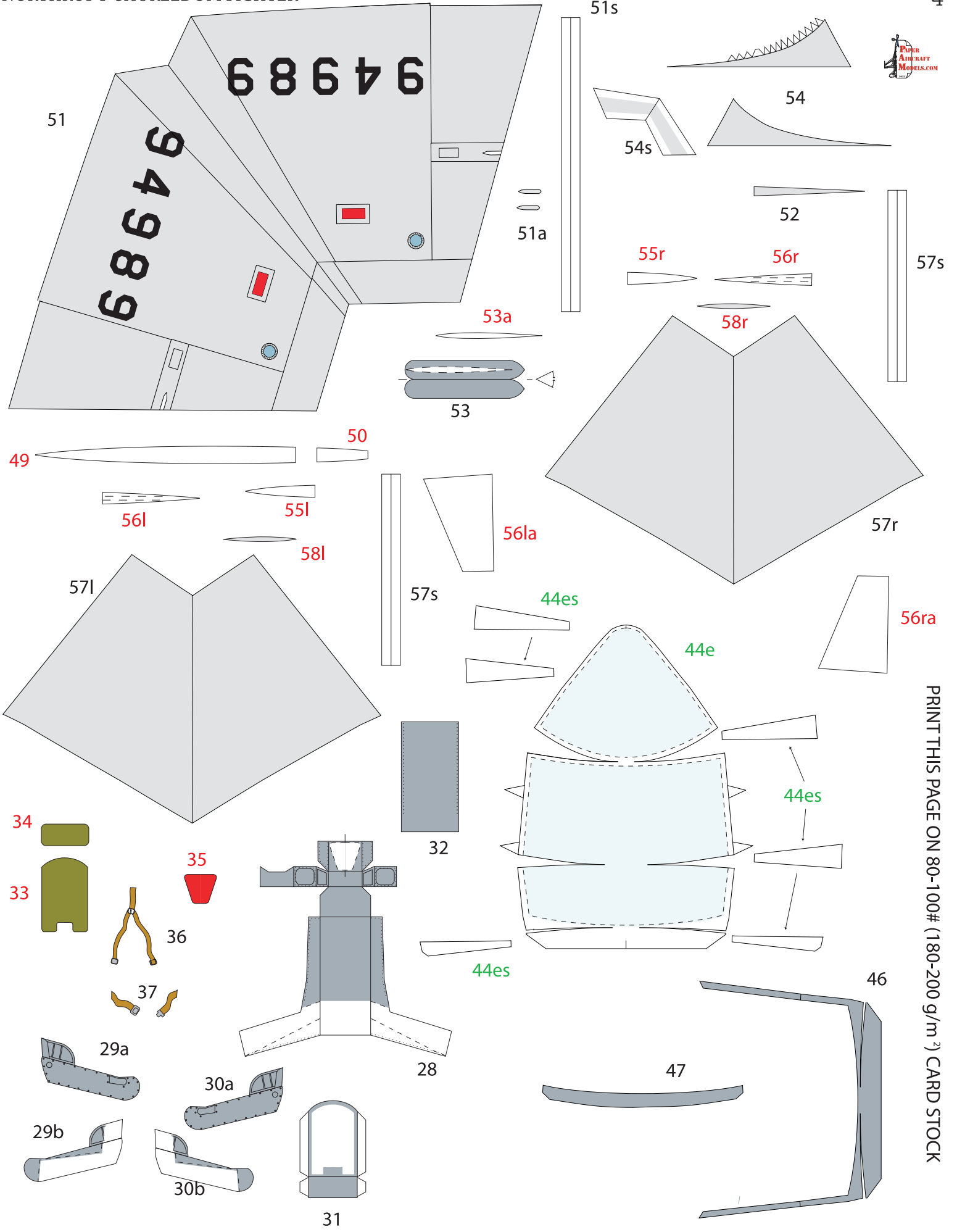
PRINT THIS PAGE ON 80-100# (180-200 g/m²) CARD STOCK



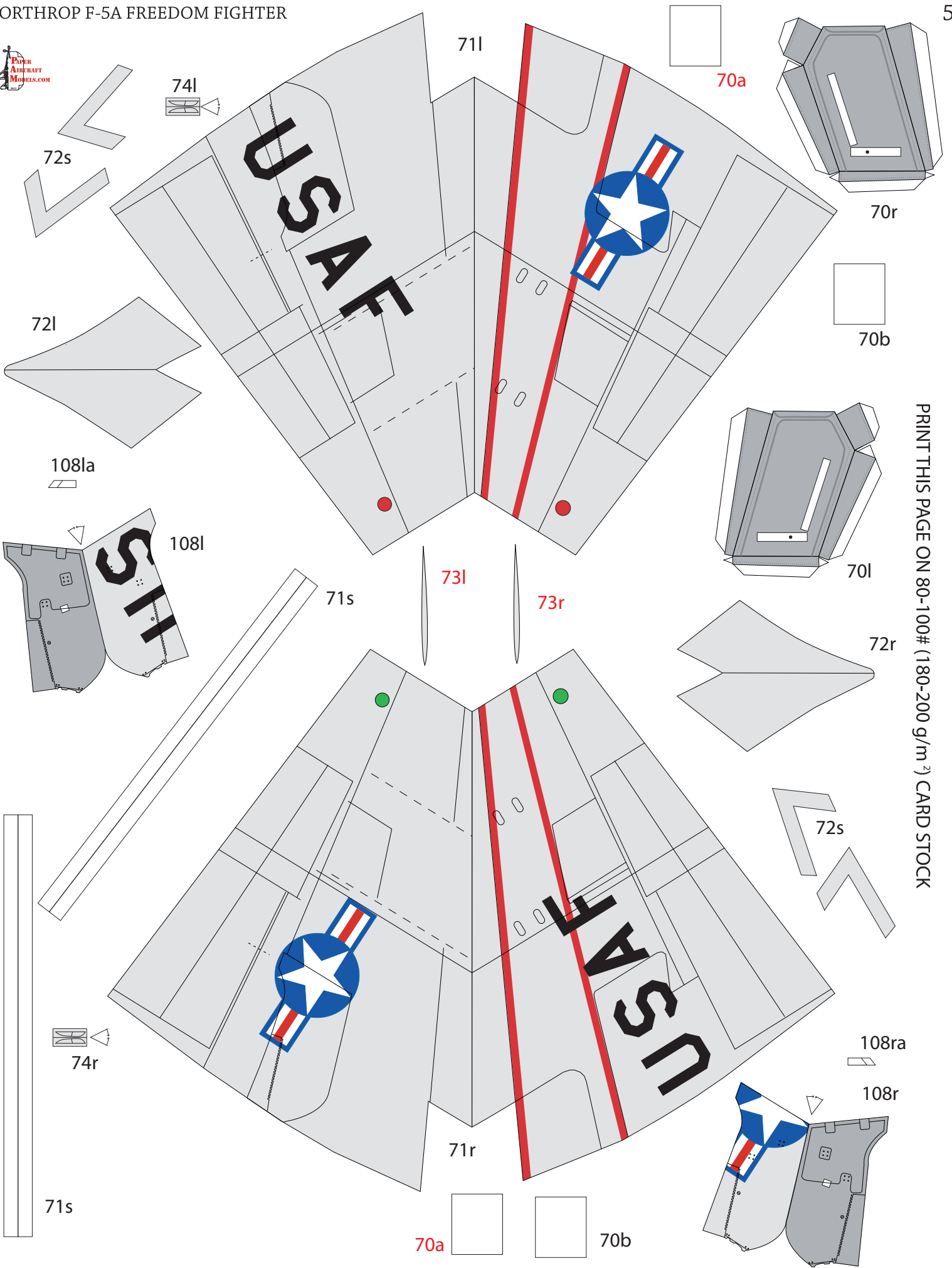
PIPER AIRCRAFT MODELS.COM

PRINT THIS PAGE ON BACK OF PAGE 3

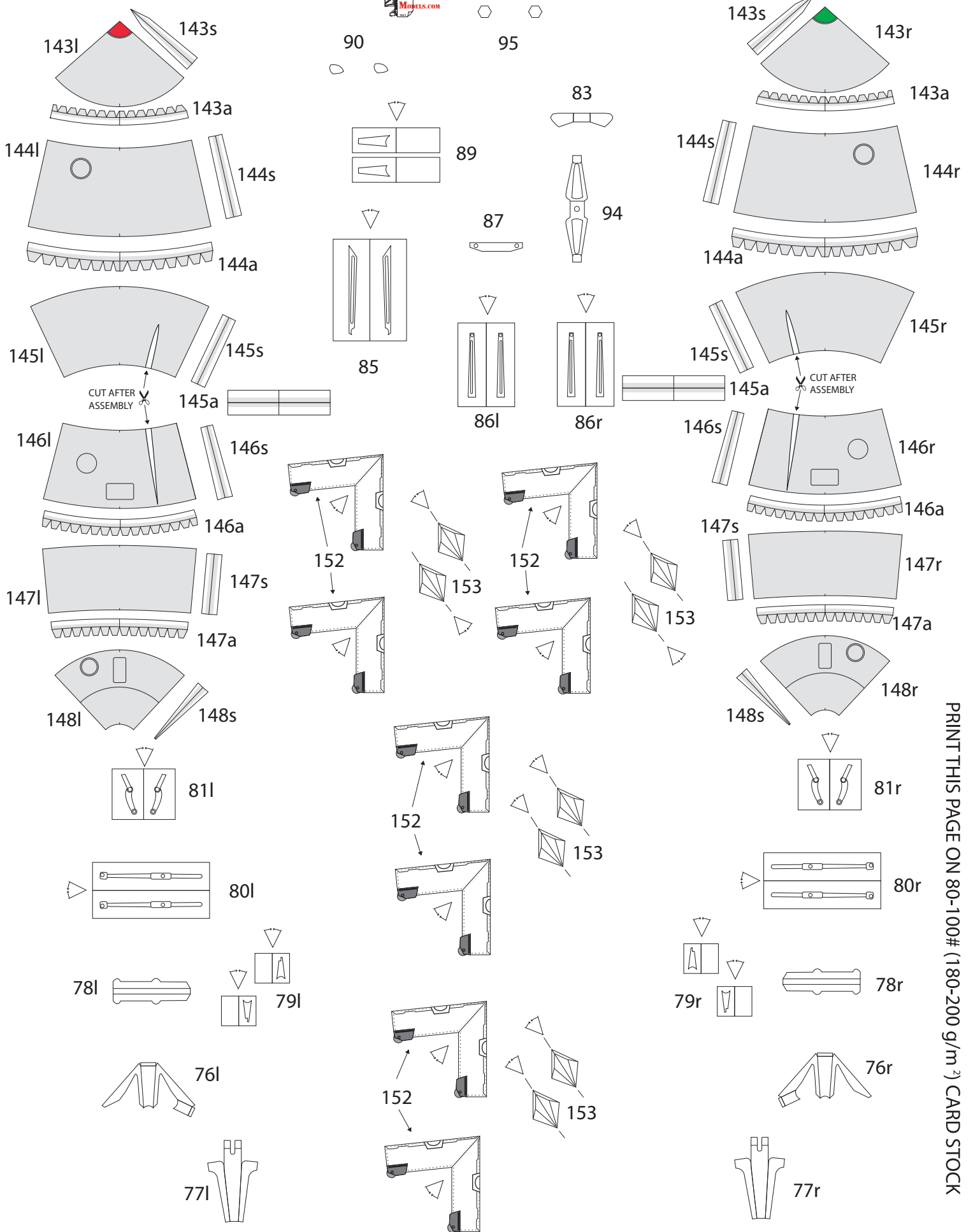




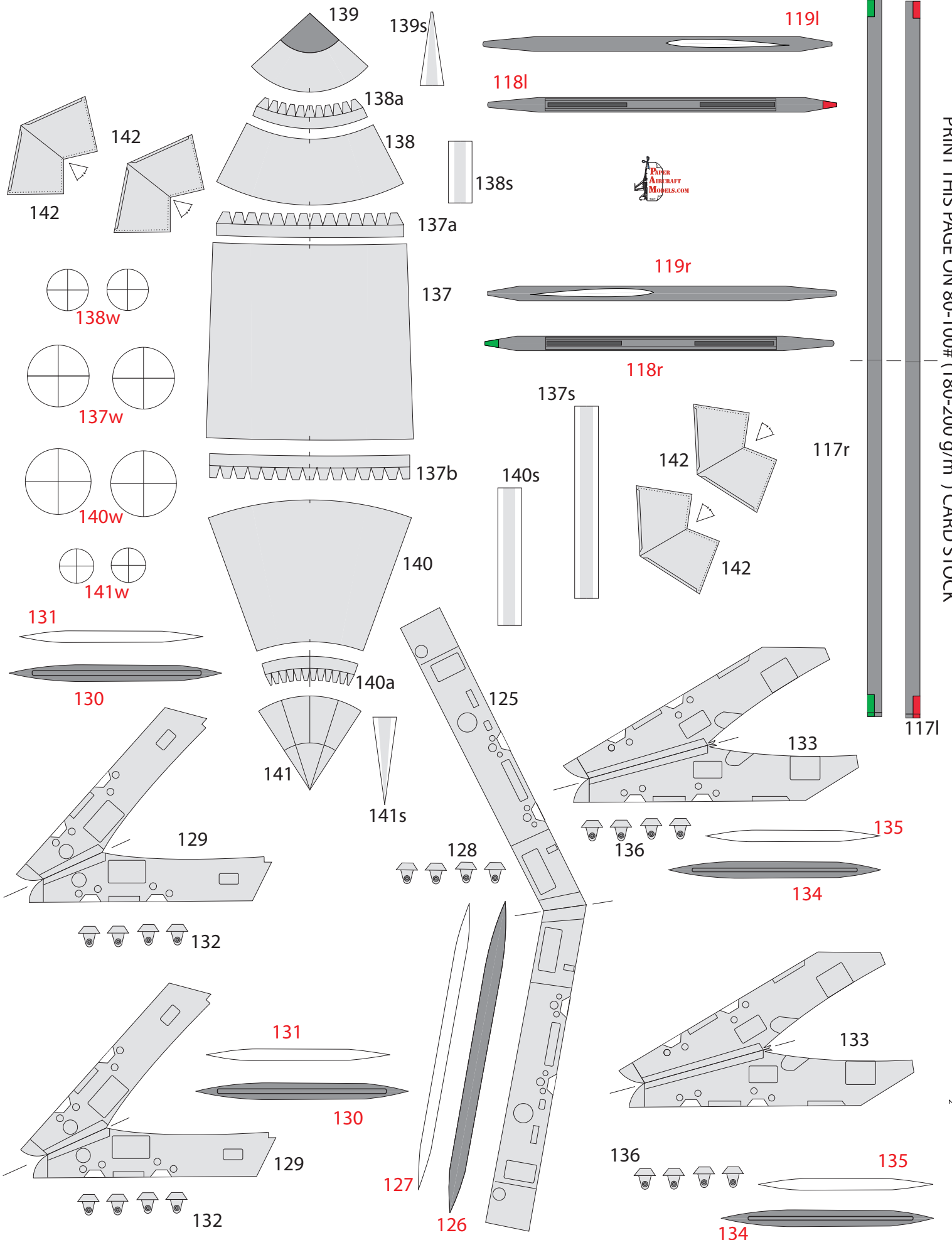
PRINT THIS PAGE ON 80-100# (180-200 g/m²) CARD STOCK



PRINT THIS PAGE ON 80-100# (180-200 g/m²) CARD STOCK



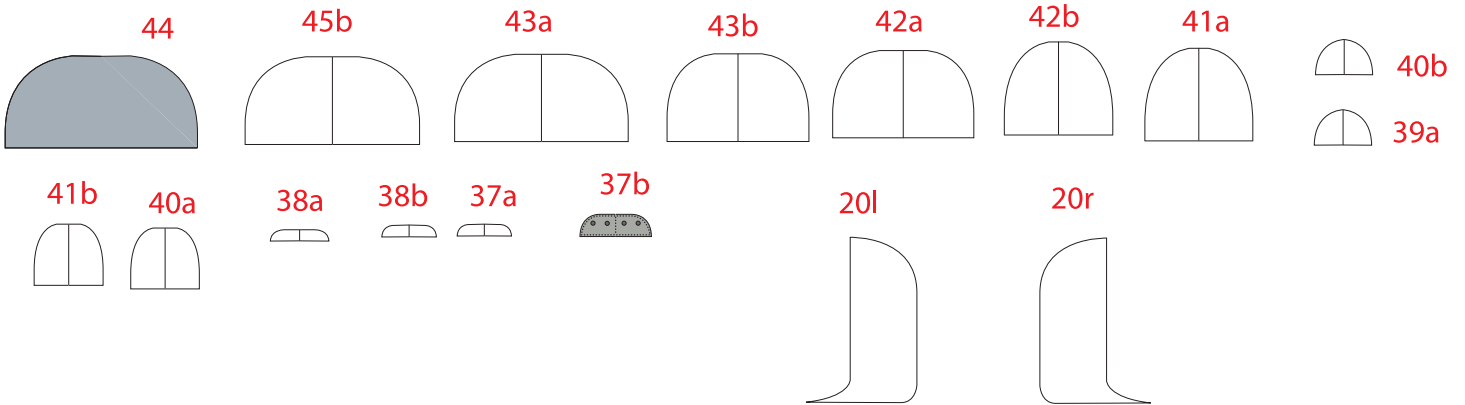
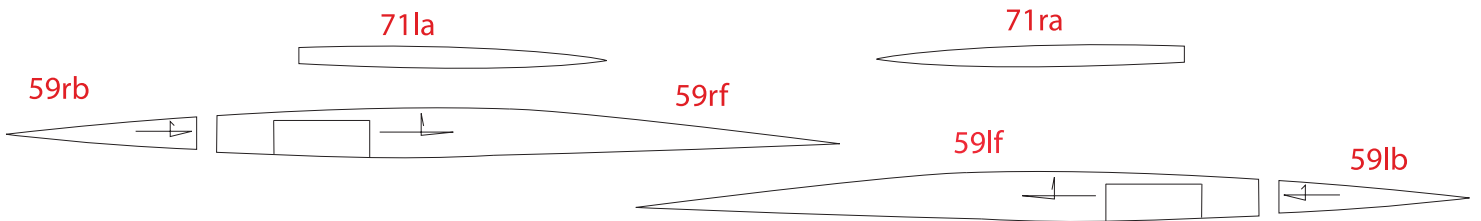
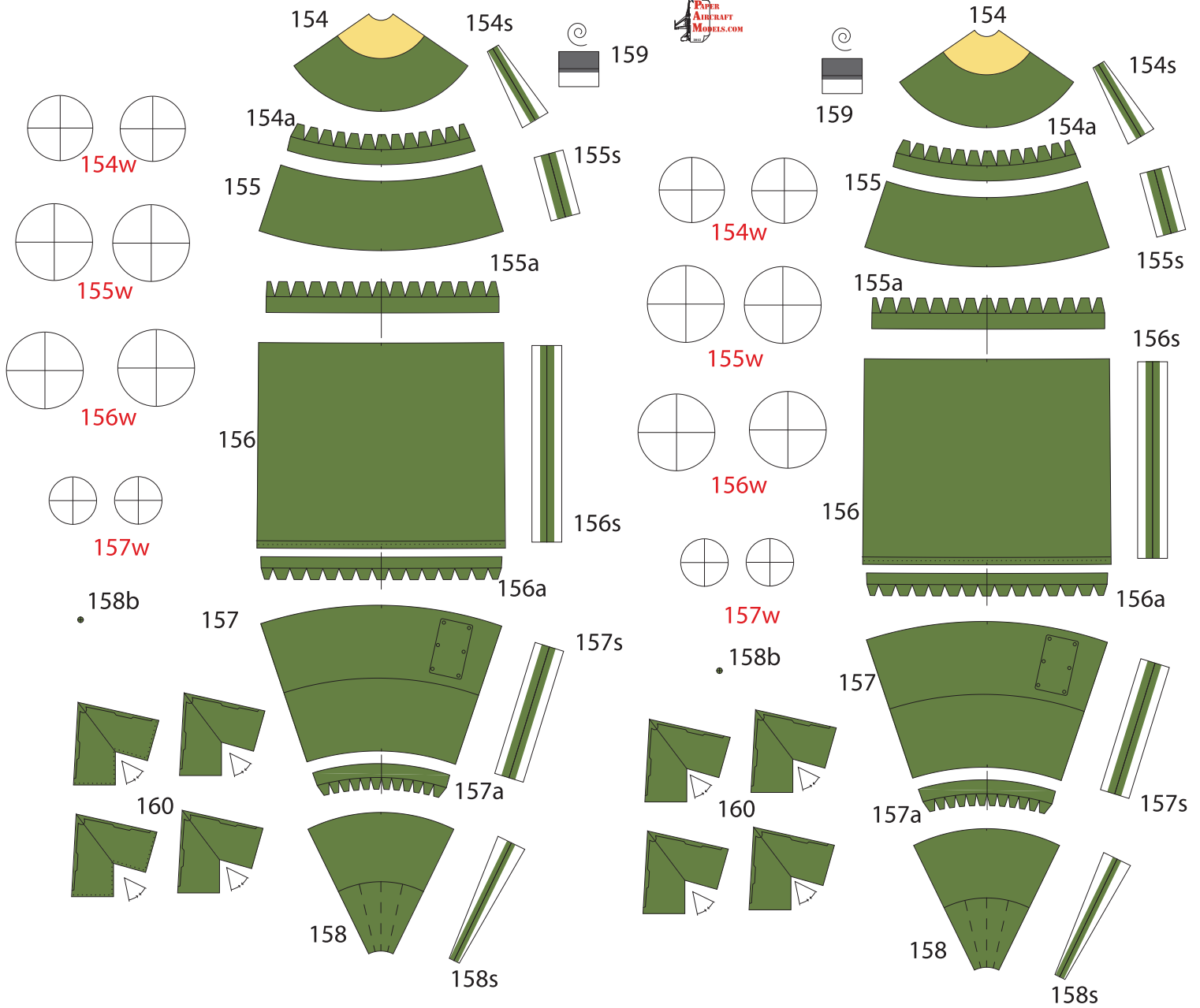
PRINT THIS PAGE ON 80-100# (180-200 g/m²) CARD STOCK

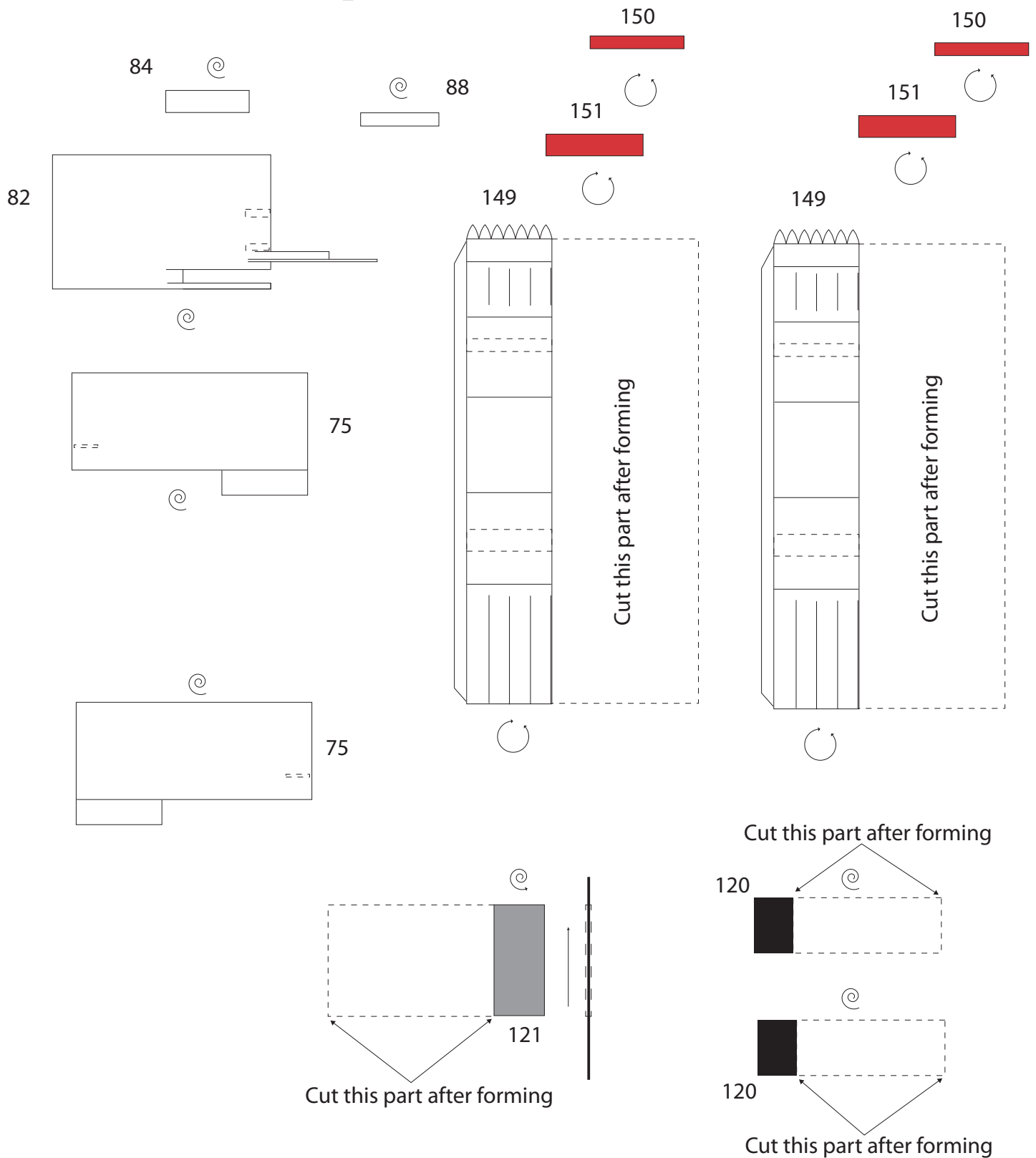


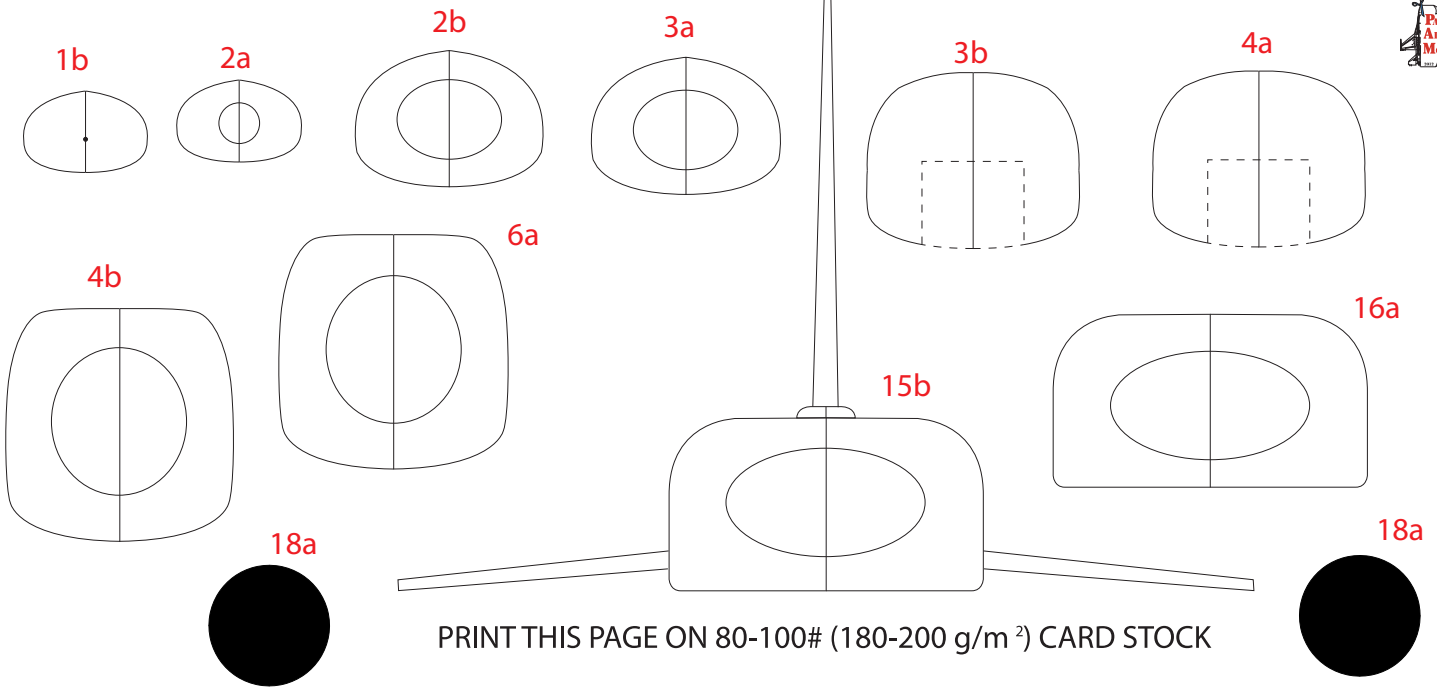
PRINT THIS PAGE ON 80-100# (180-200 g/m) CARD STOCK

PRINT THIS PAGE ON BACK OF PAGE 7

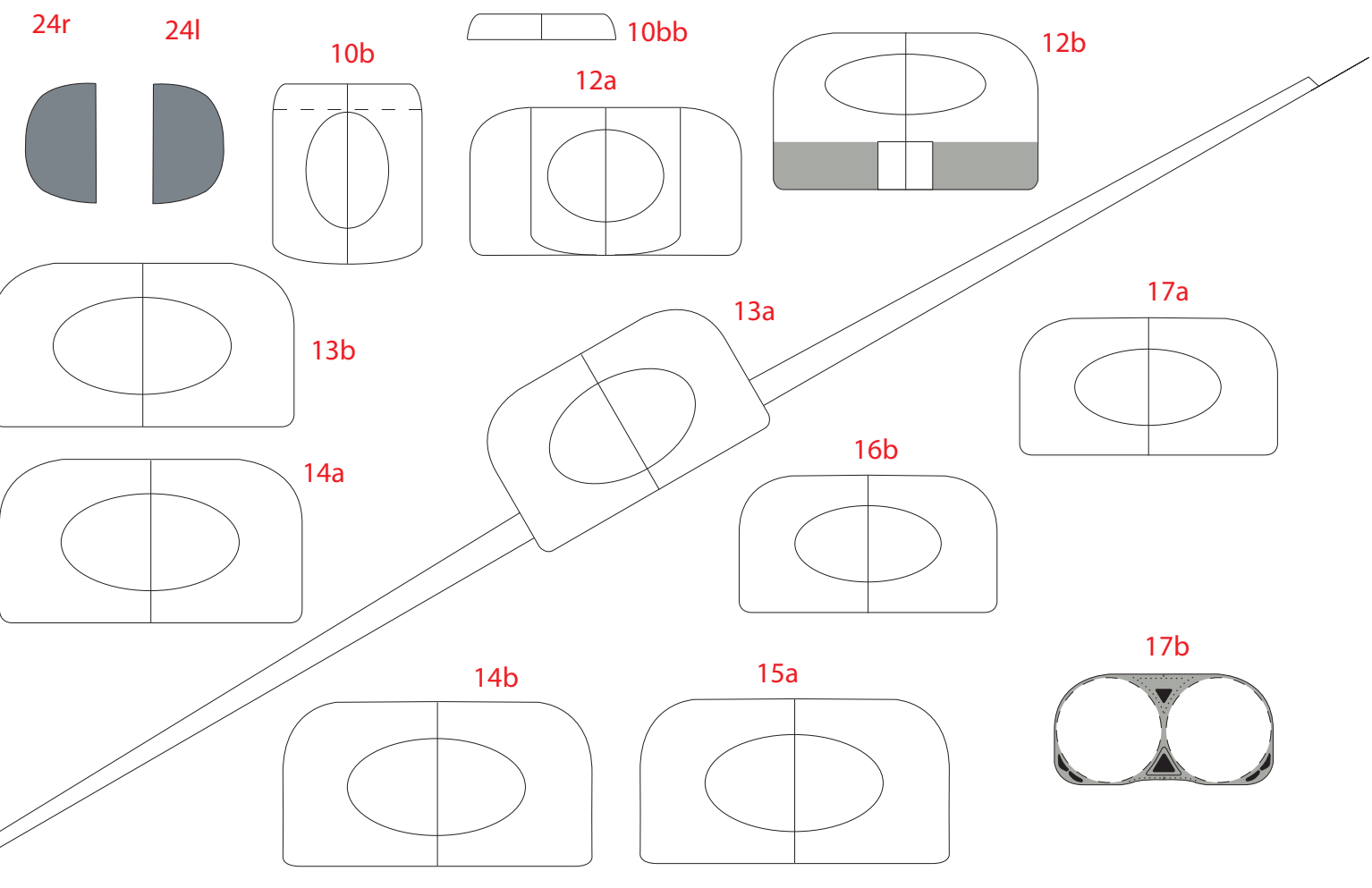
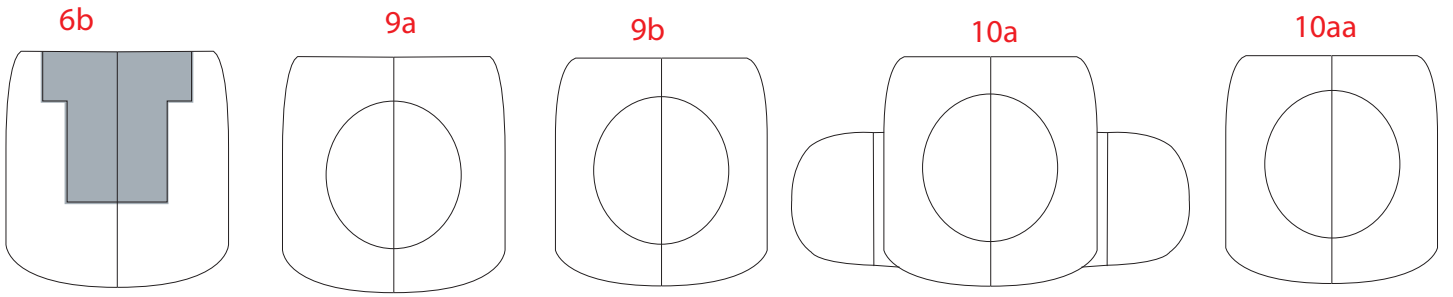






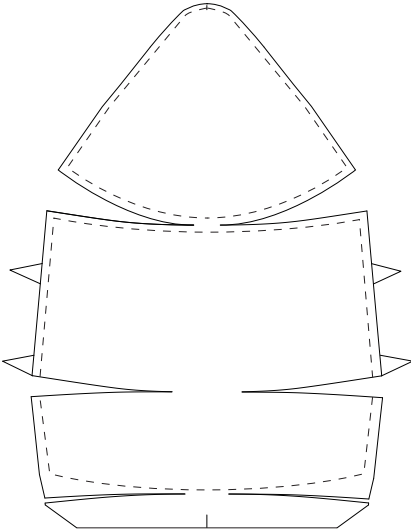


PRINT THIS PAGE ON 80-100# (180-200 g/m²) CARD STOCK

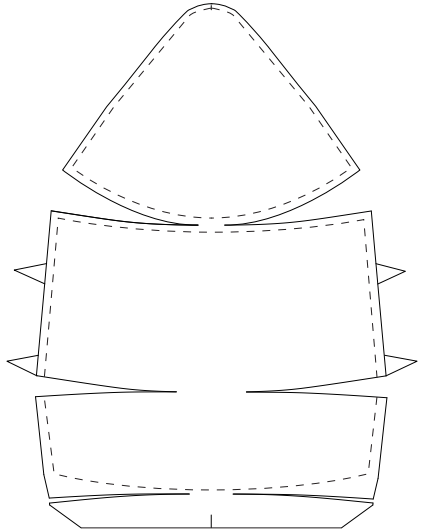




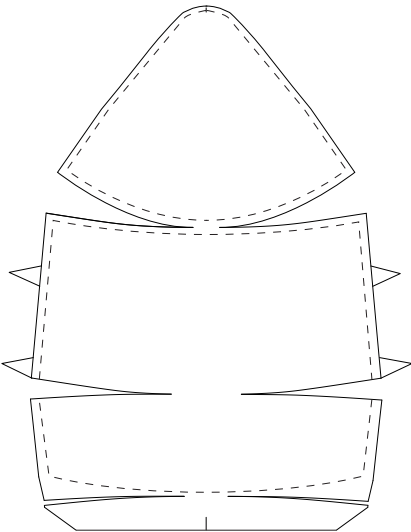
PRINT THIS PAGE ON TRANSPARENT FOIL FOR LASER AND INKJET PRINTERS ONLY!



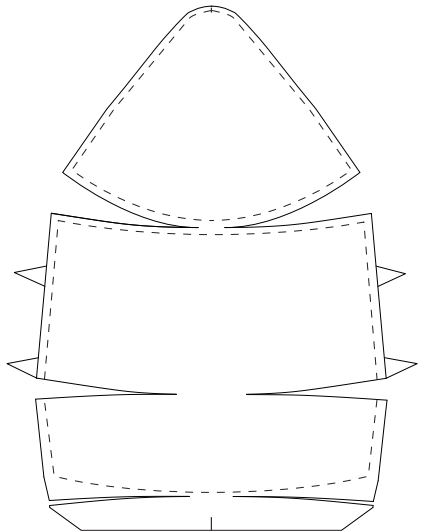
44



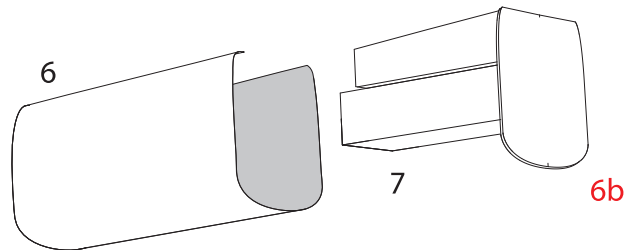
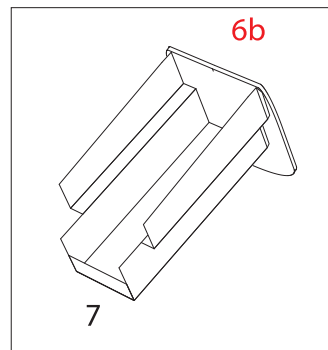
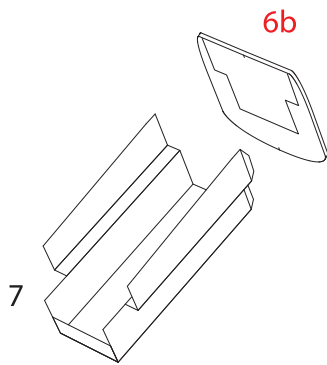
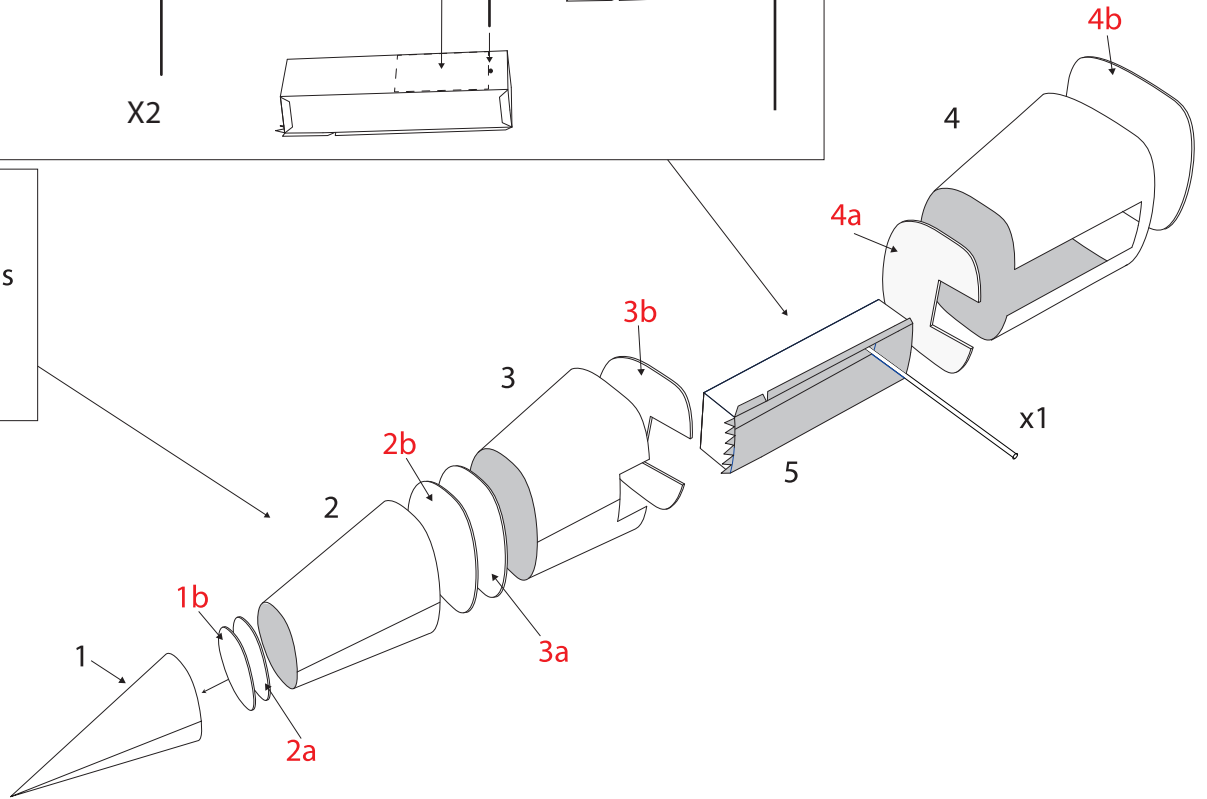
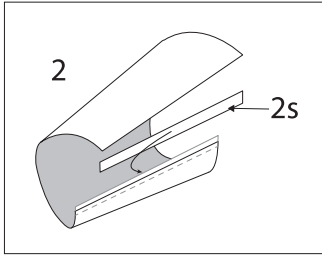
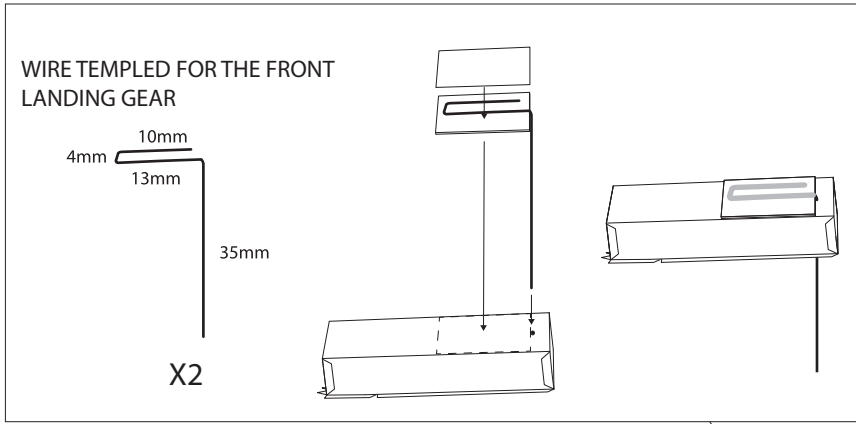
44

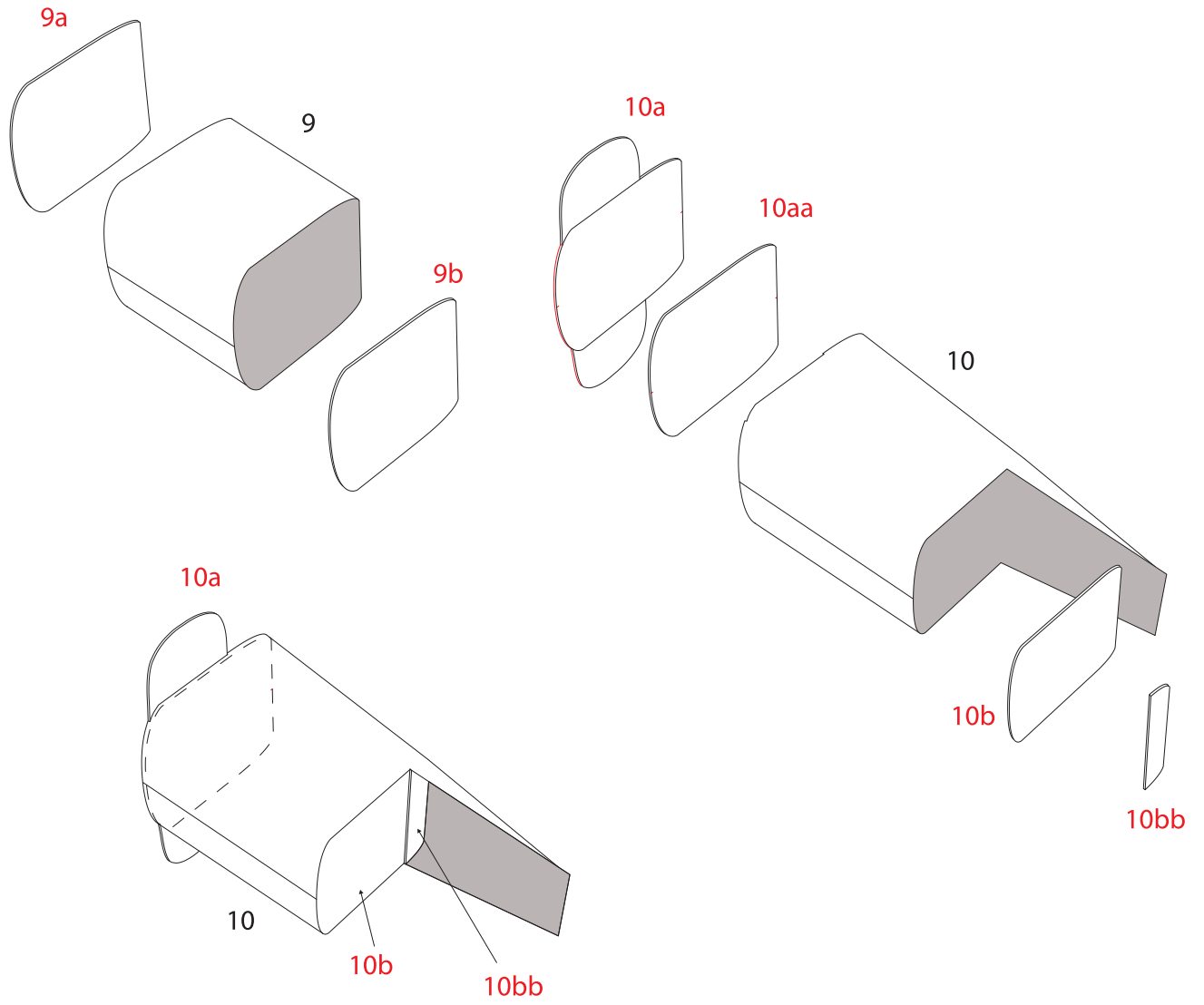


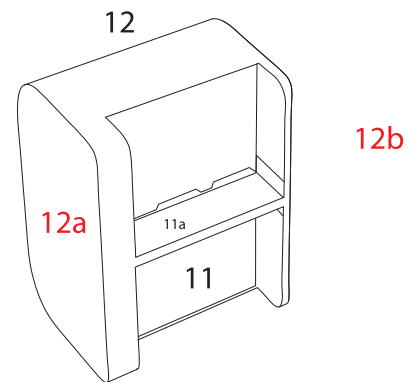
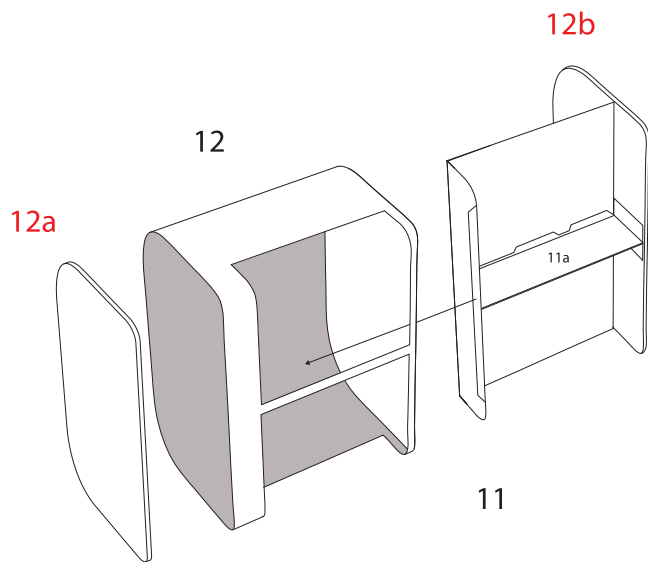
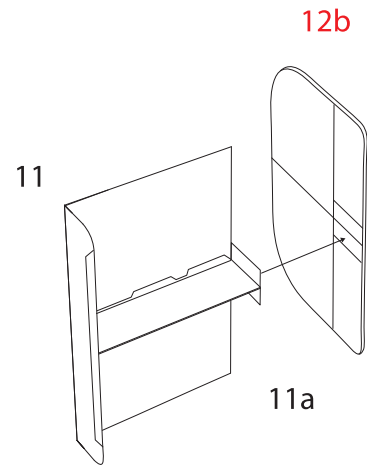
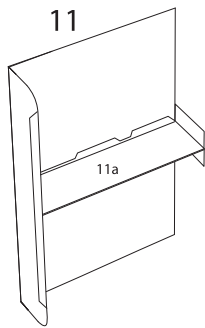
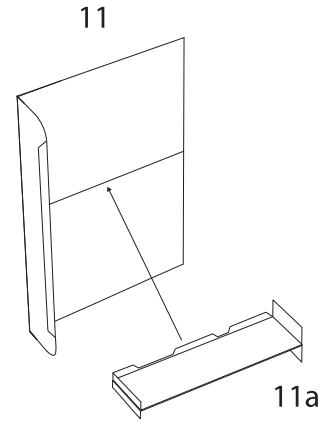
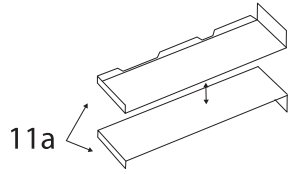
44

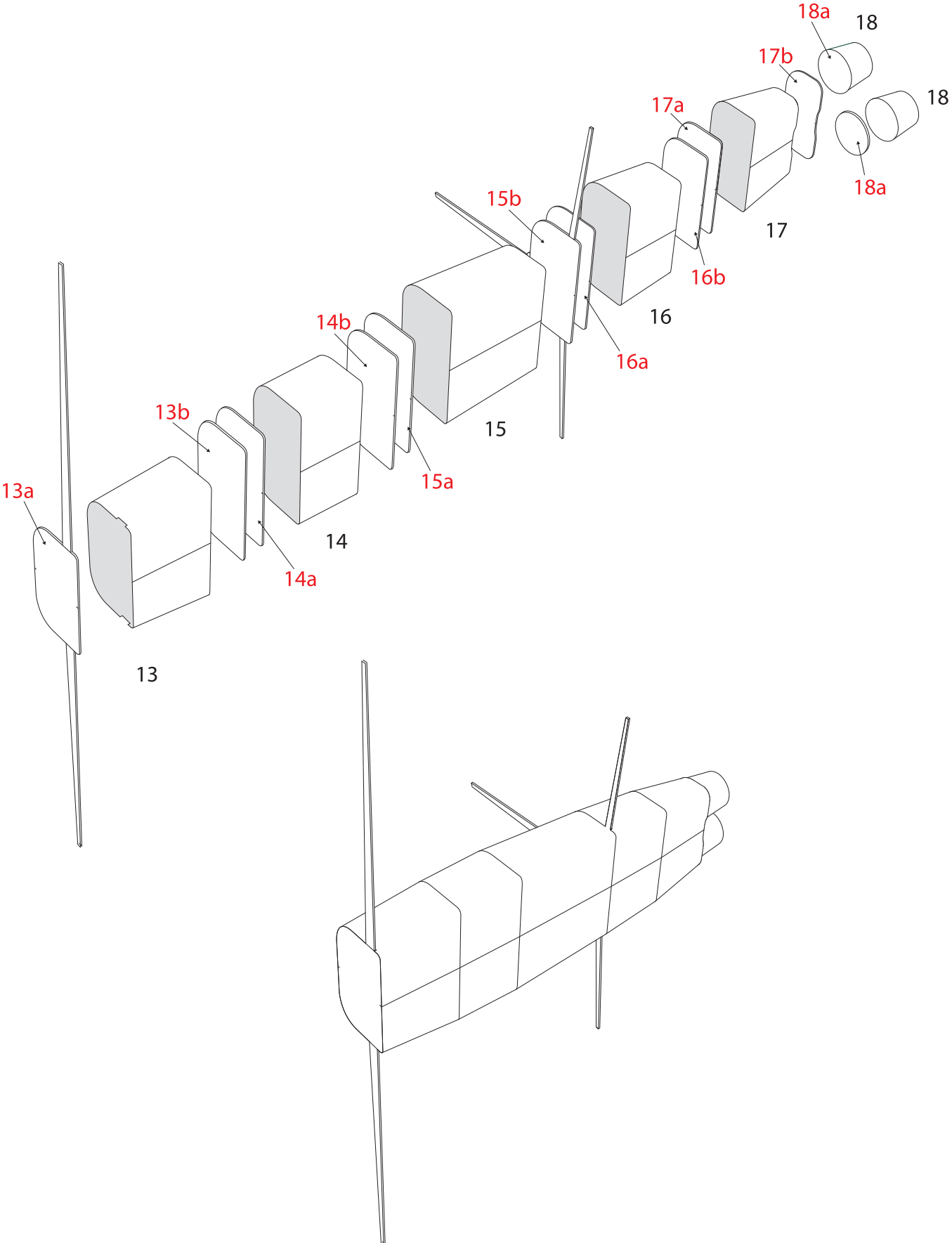


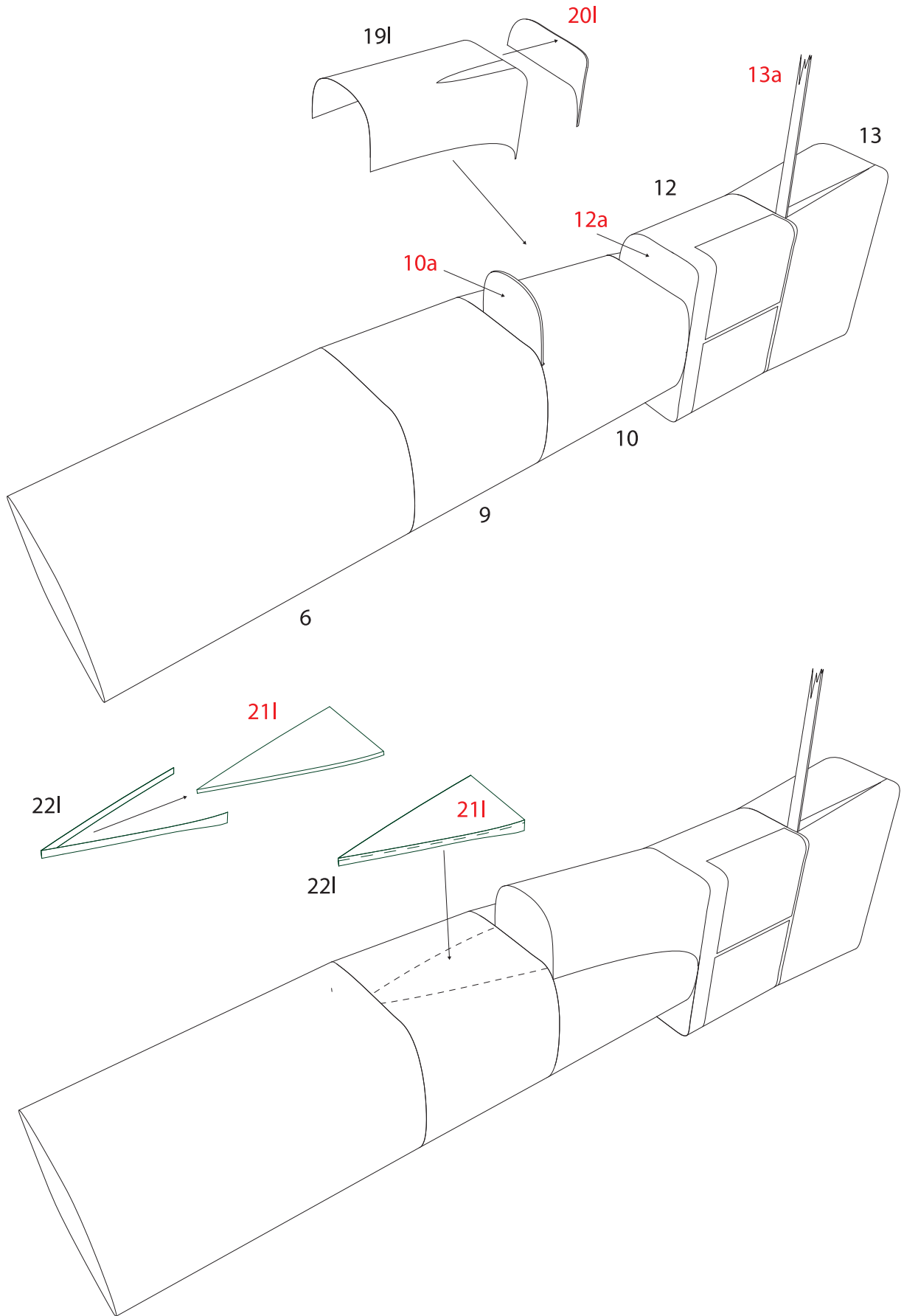
44

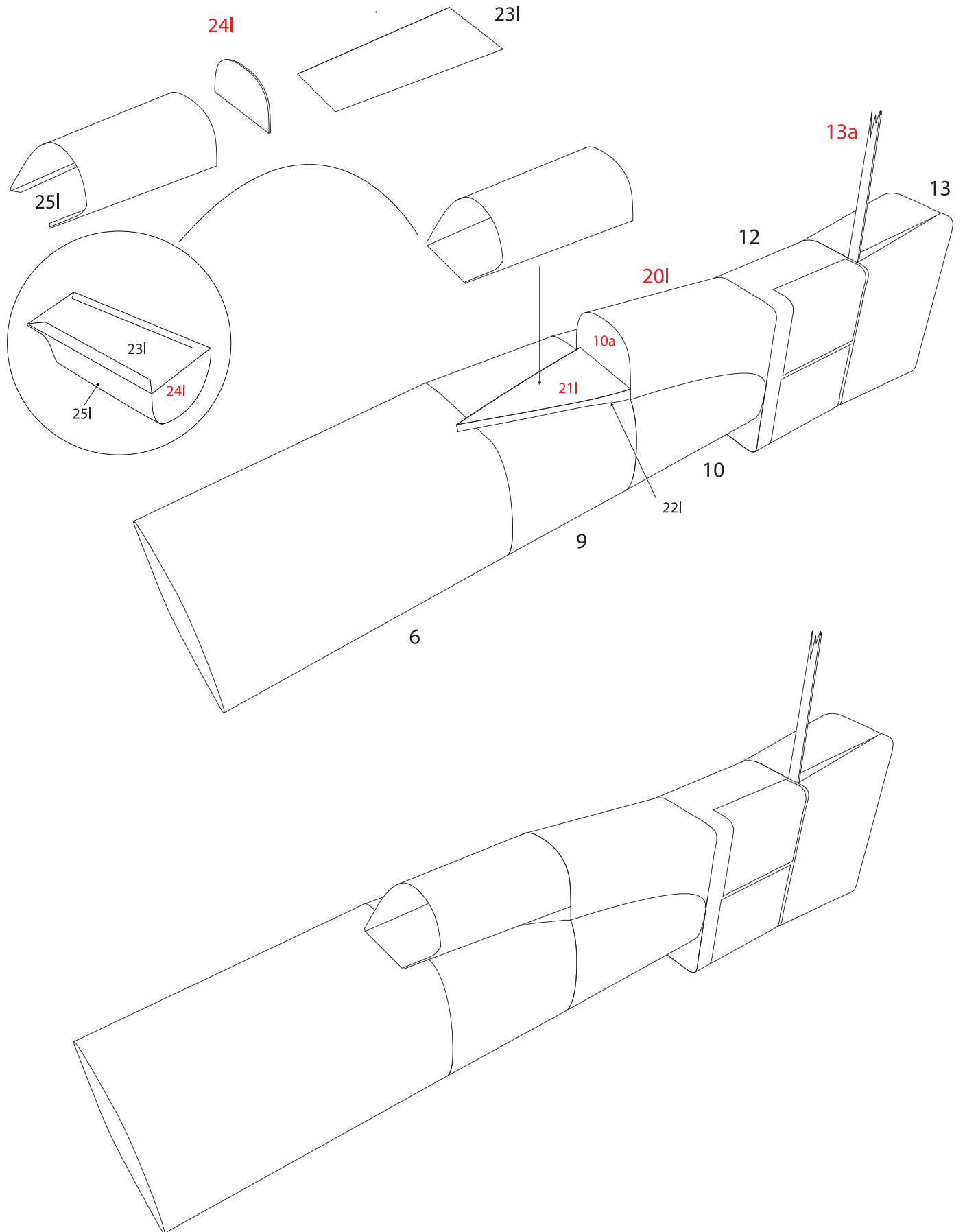


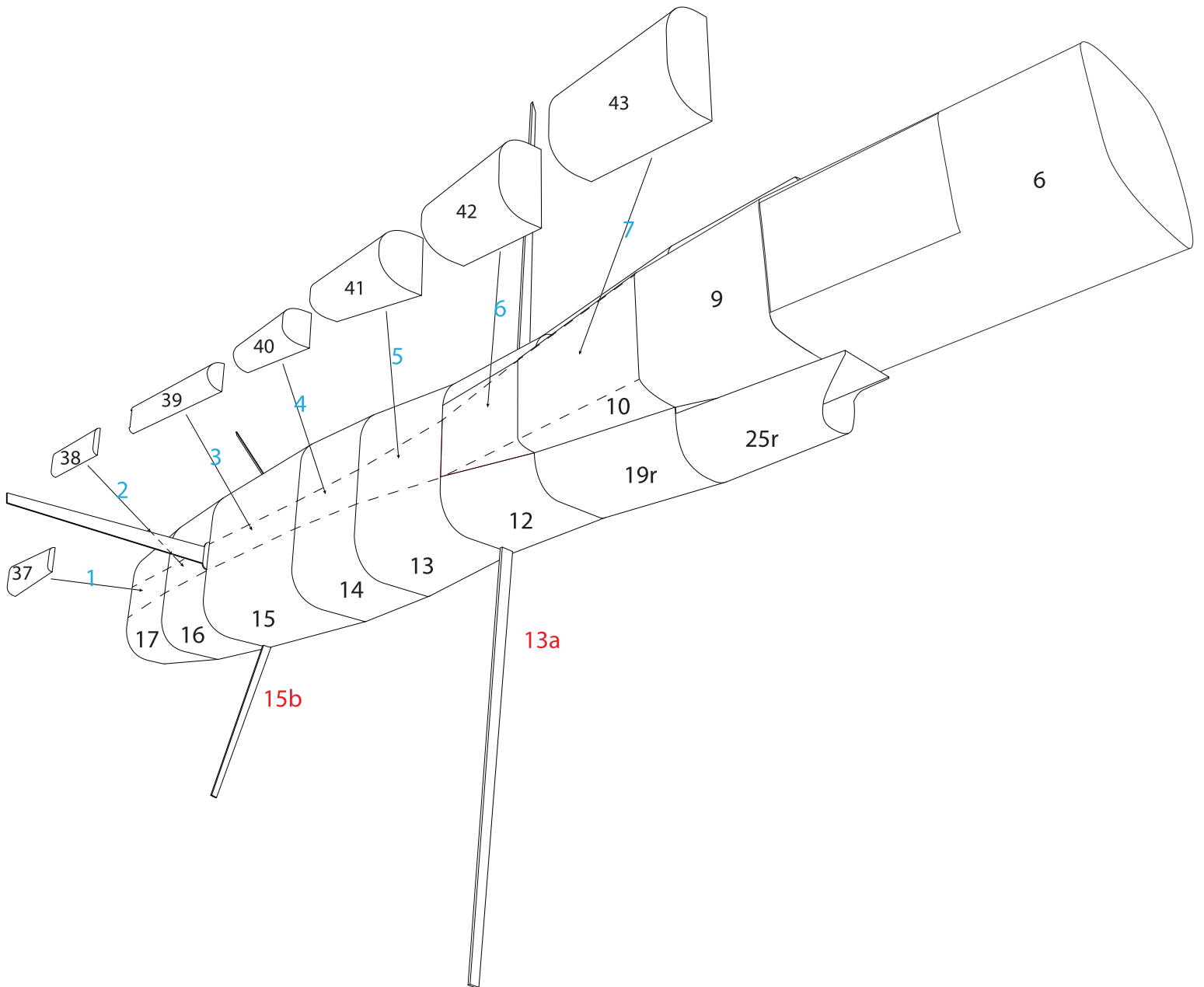
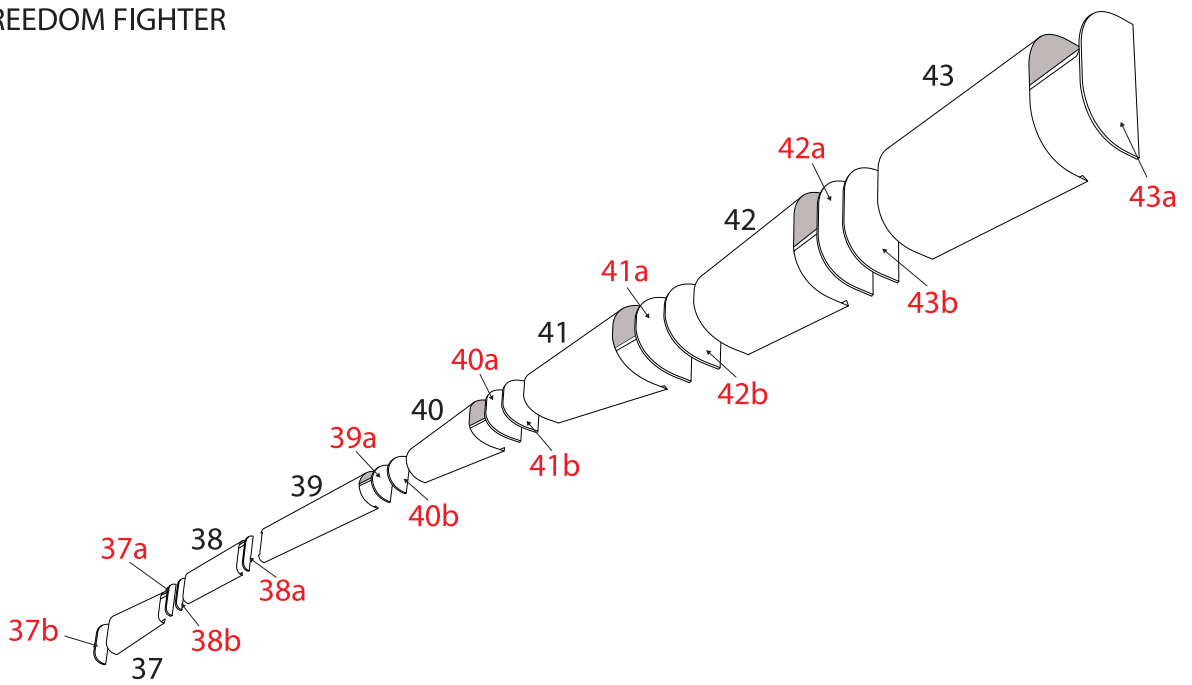


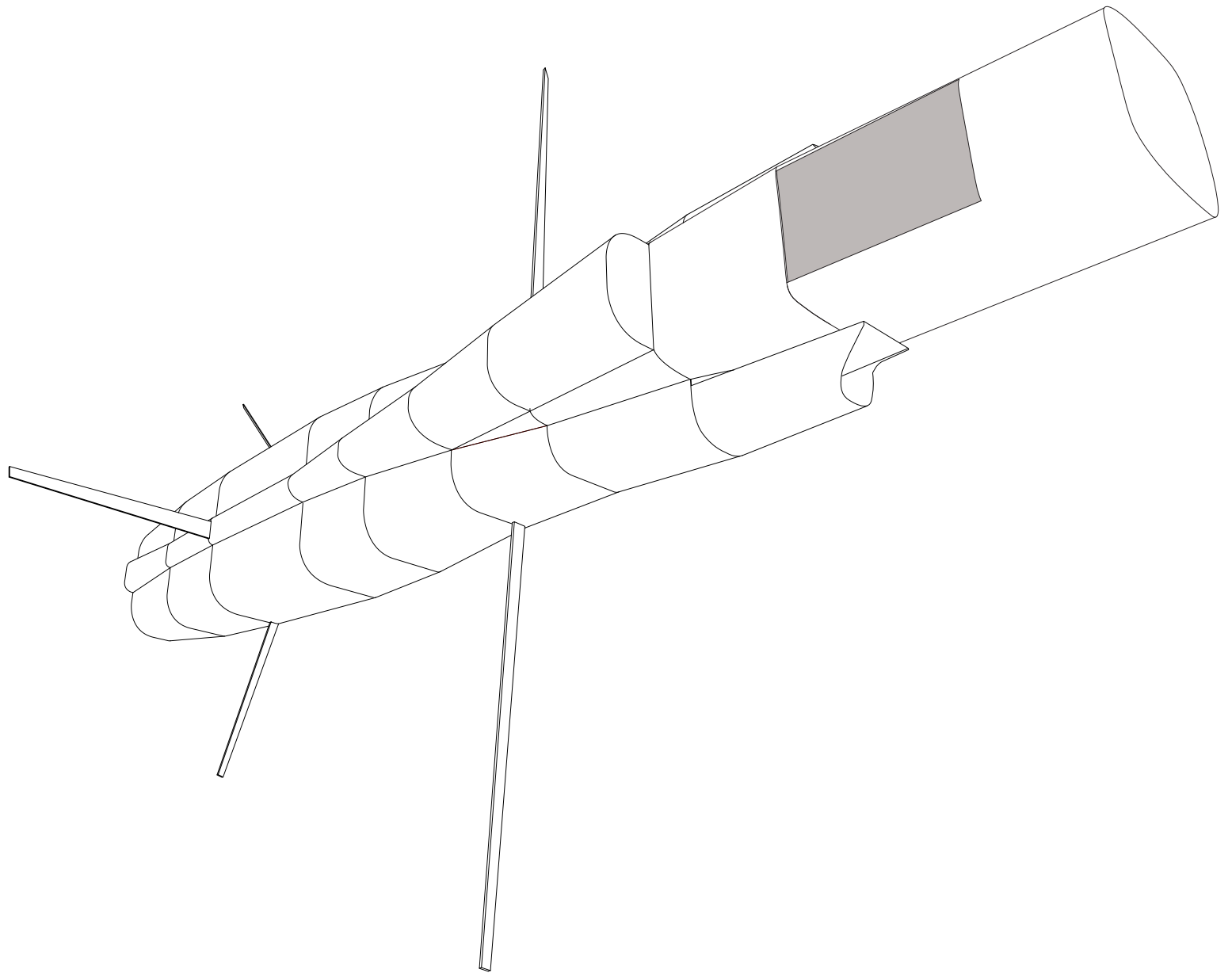


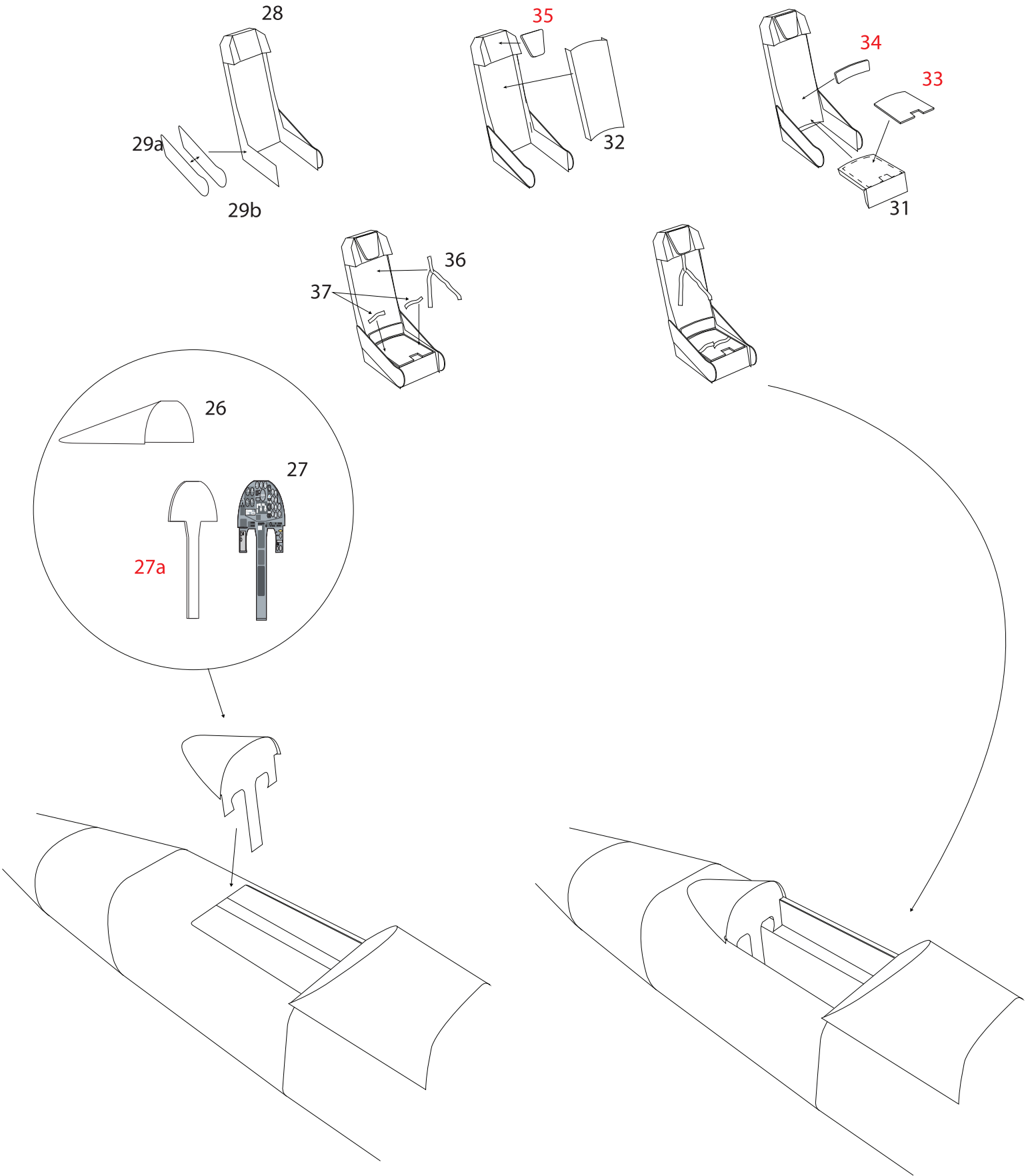


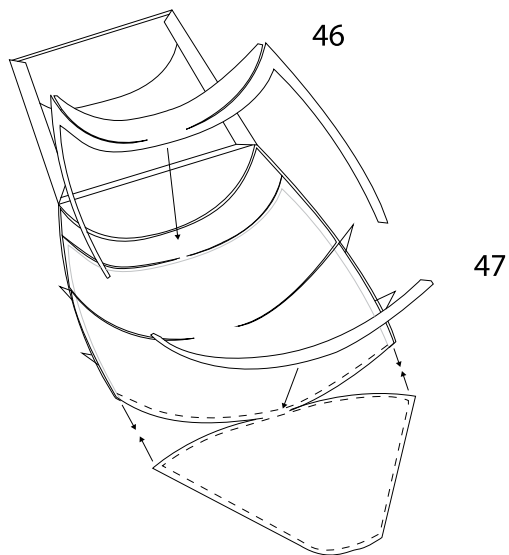
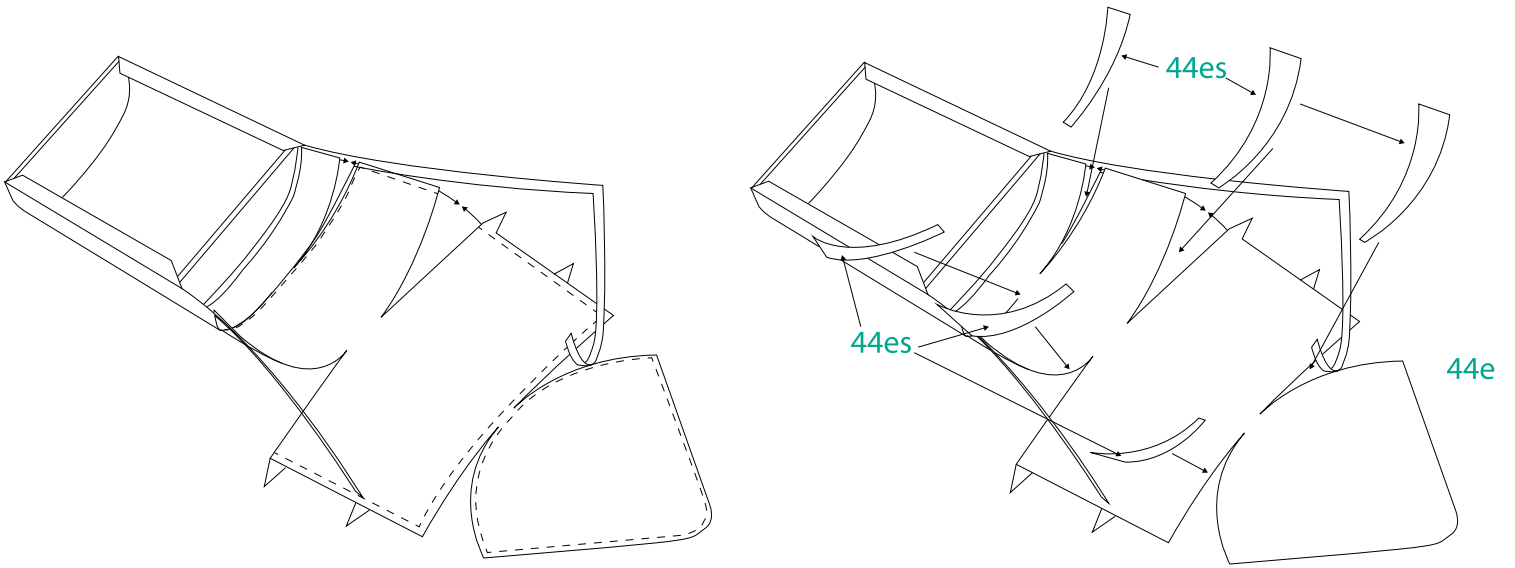
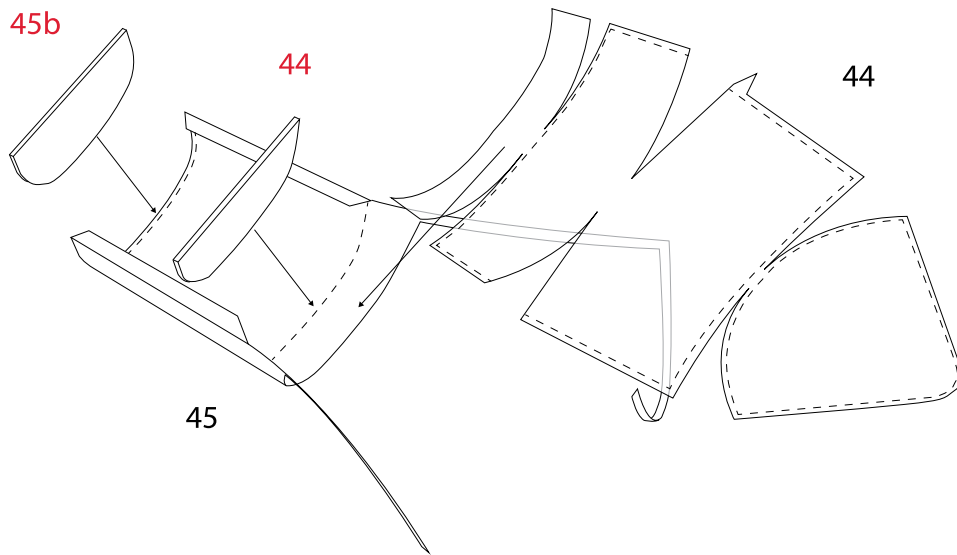


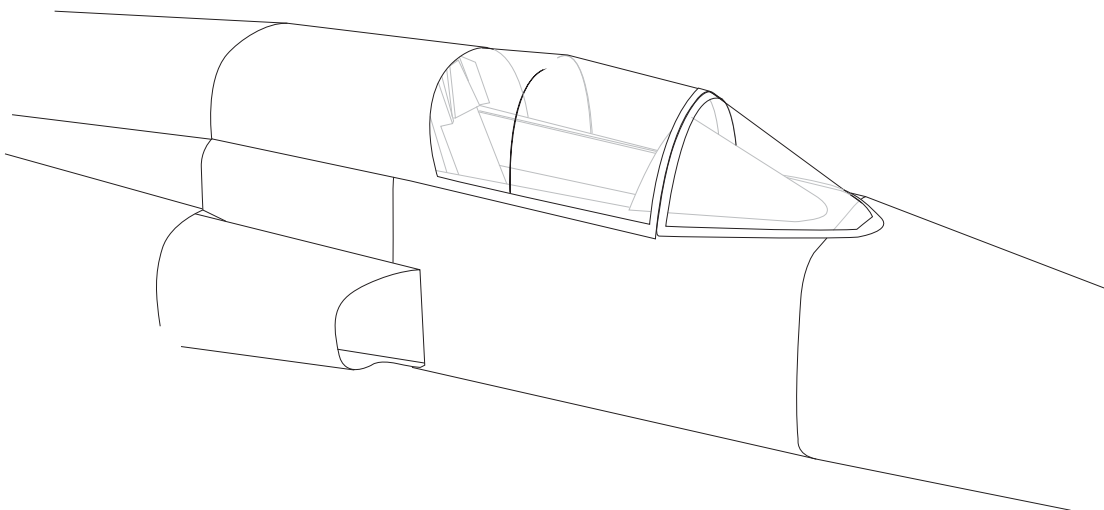
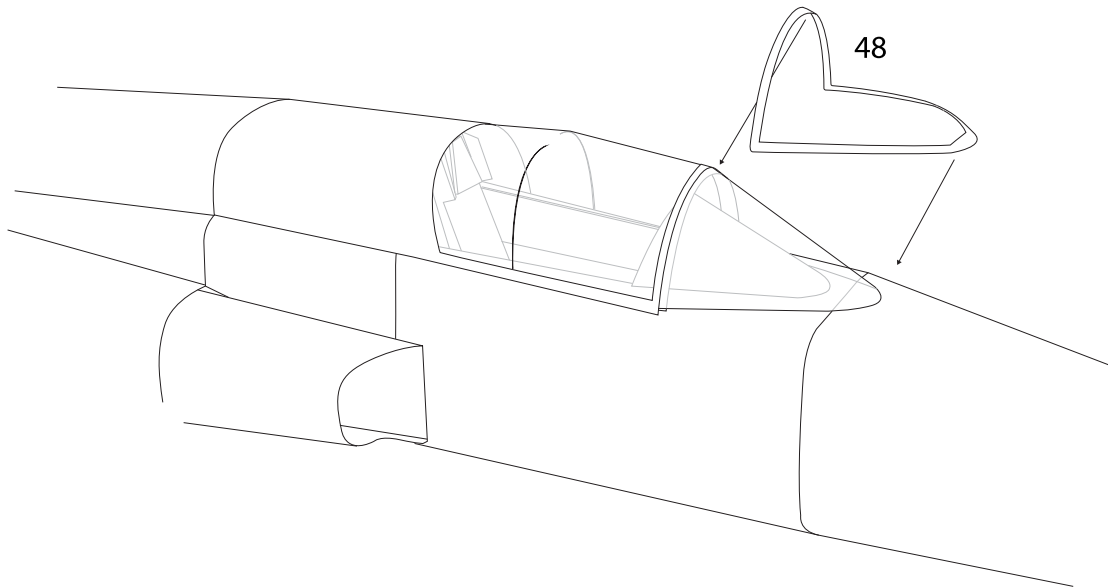
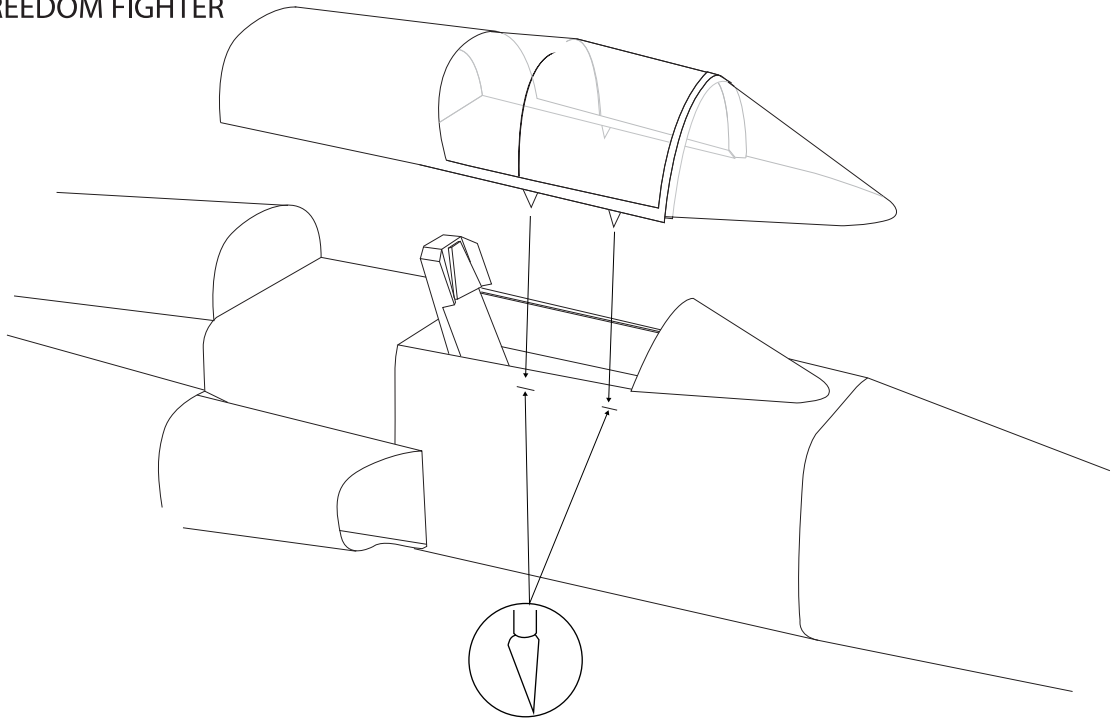


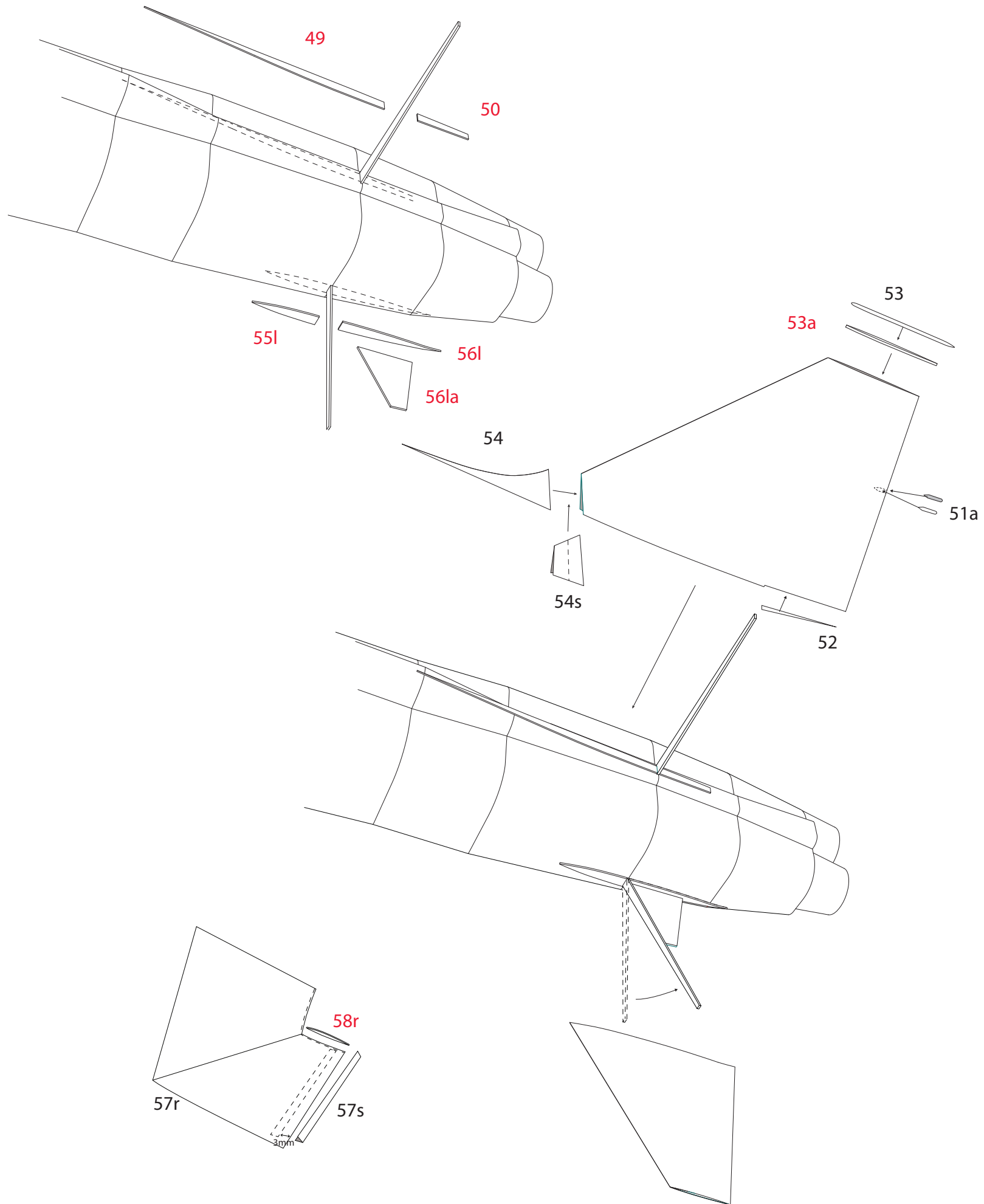


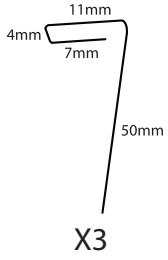




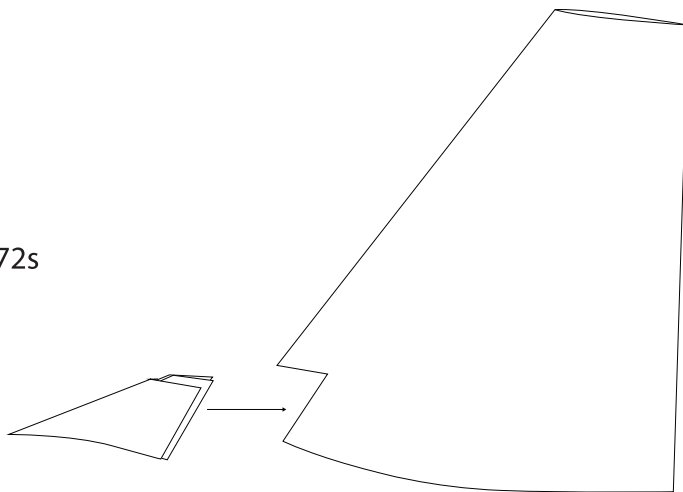
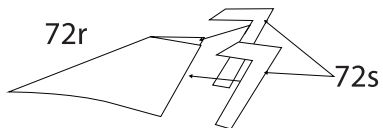
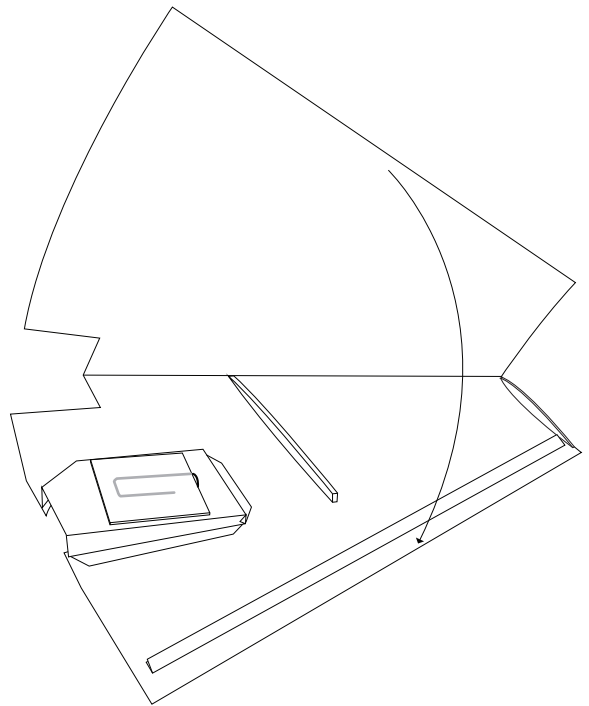
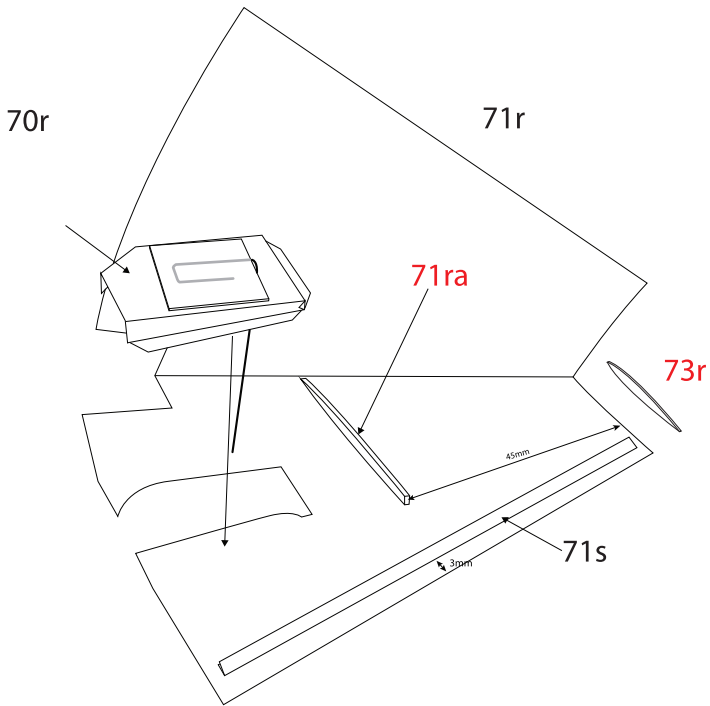
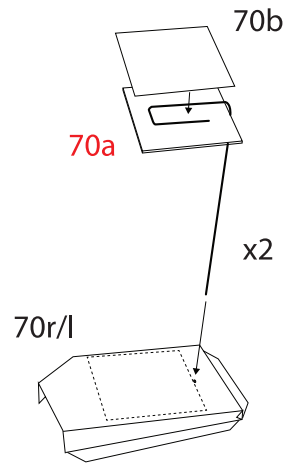


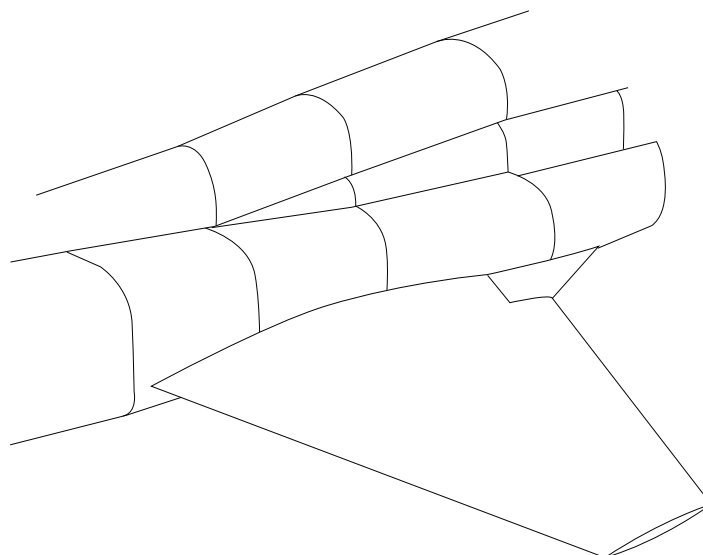
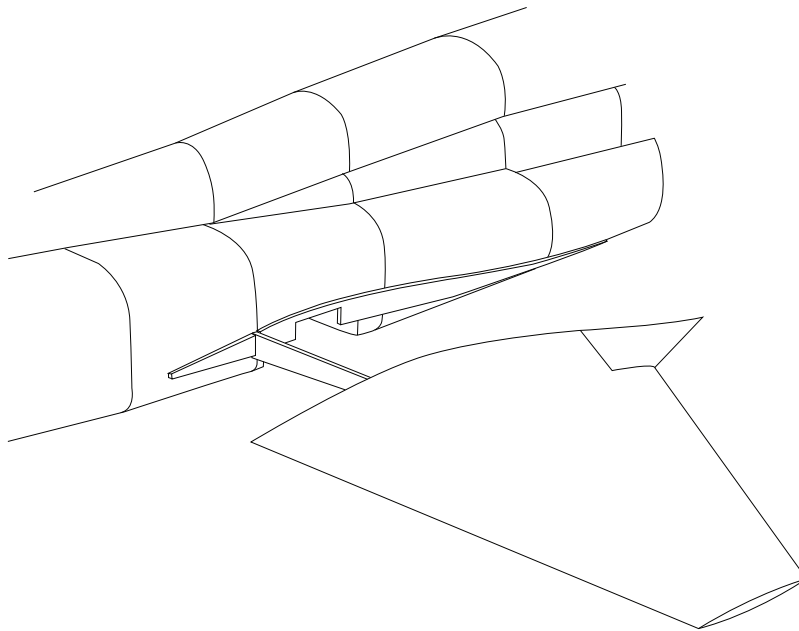
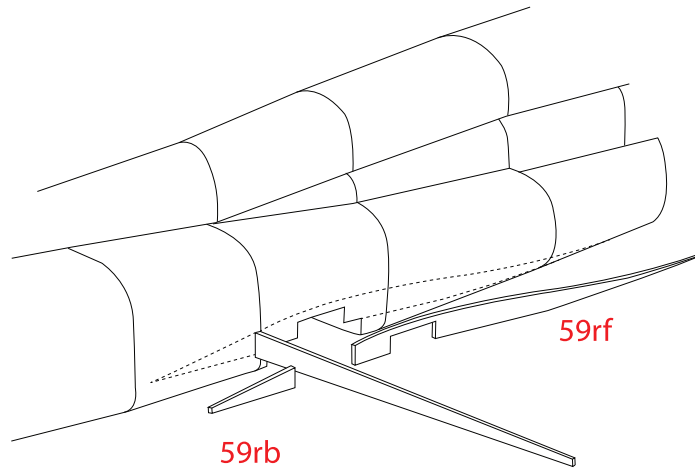


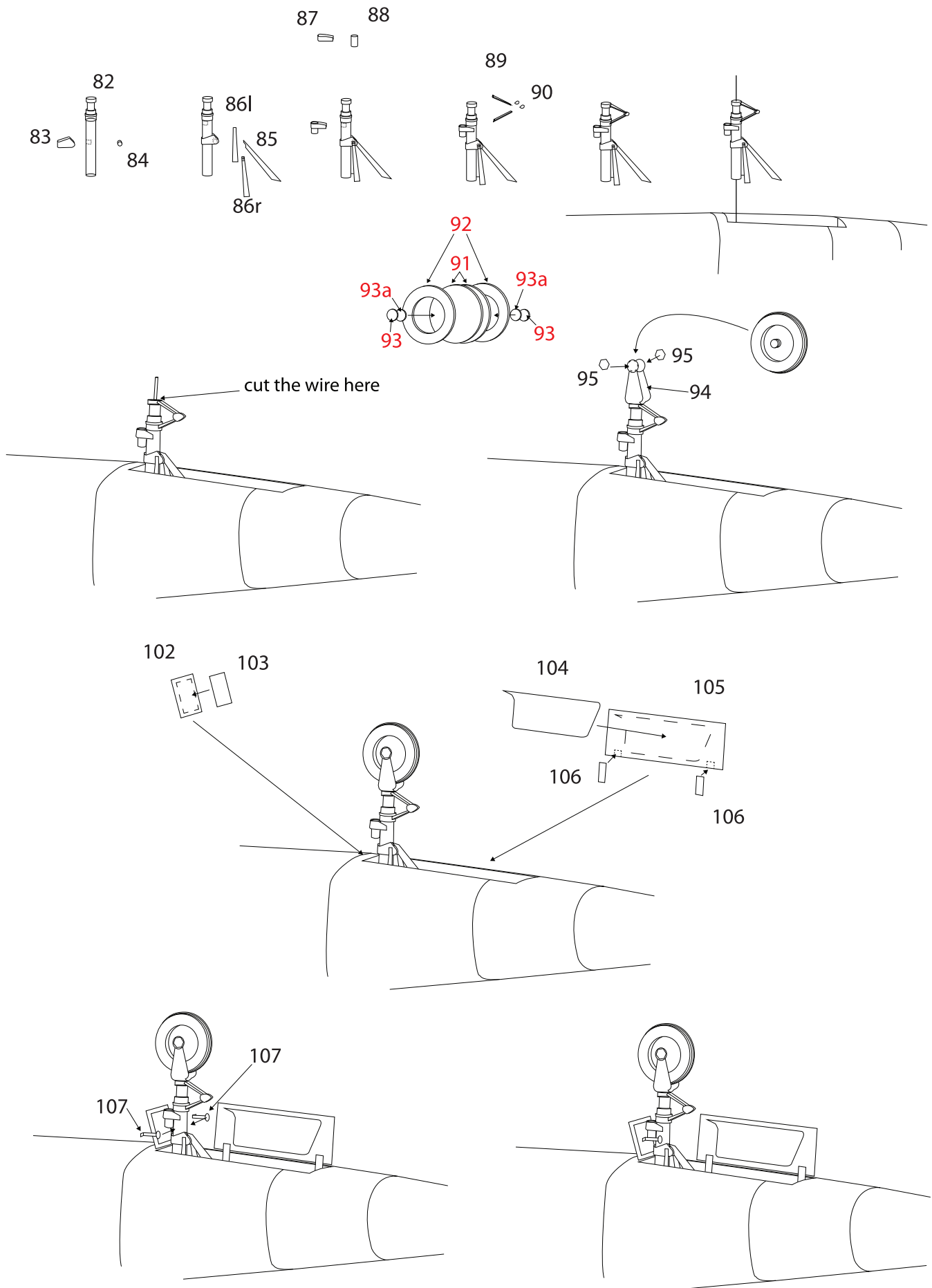


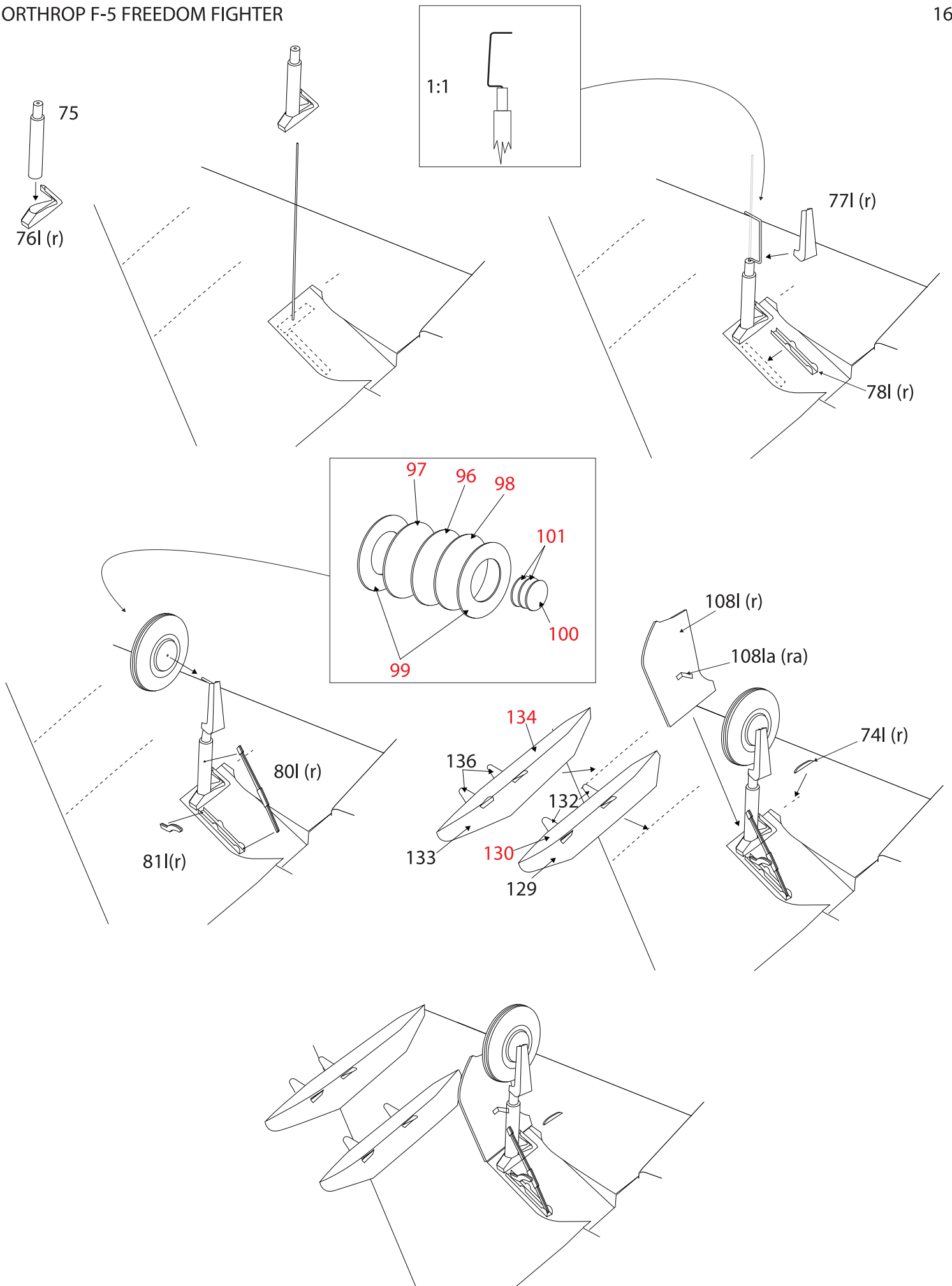


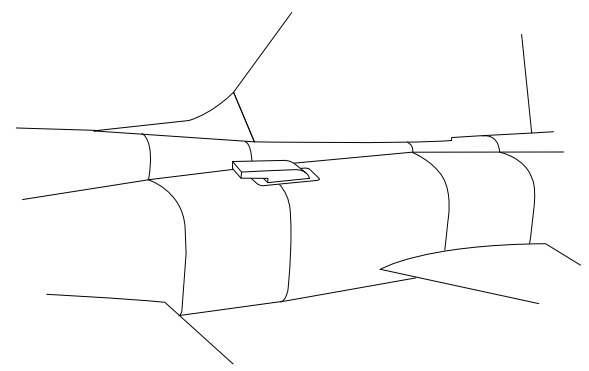
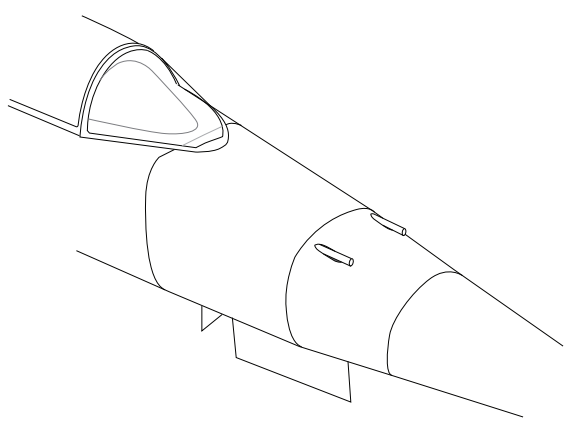
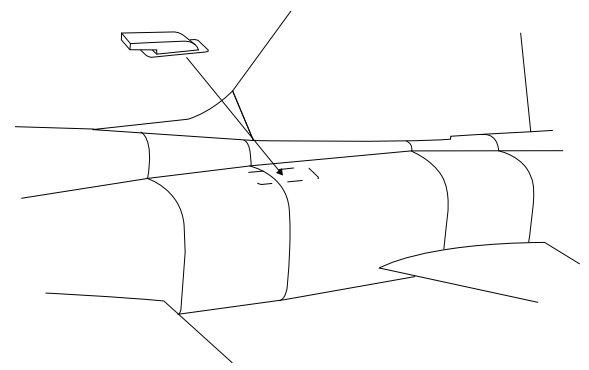
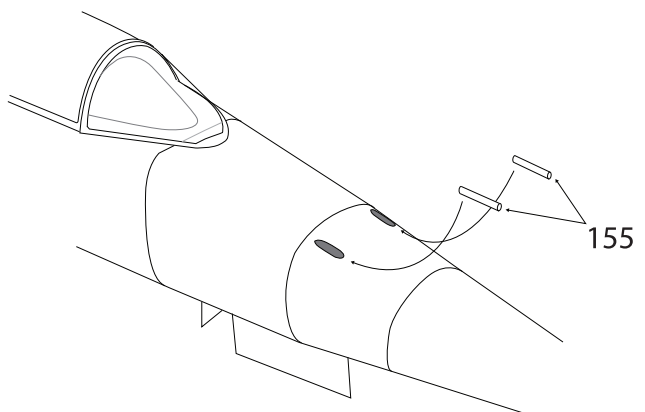
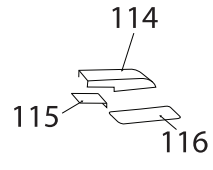
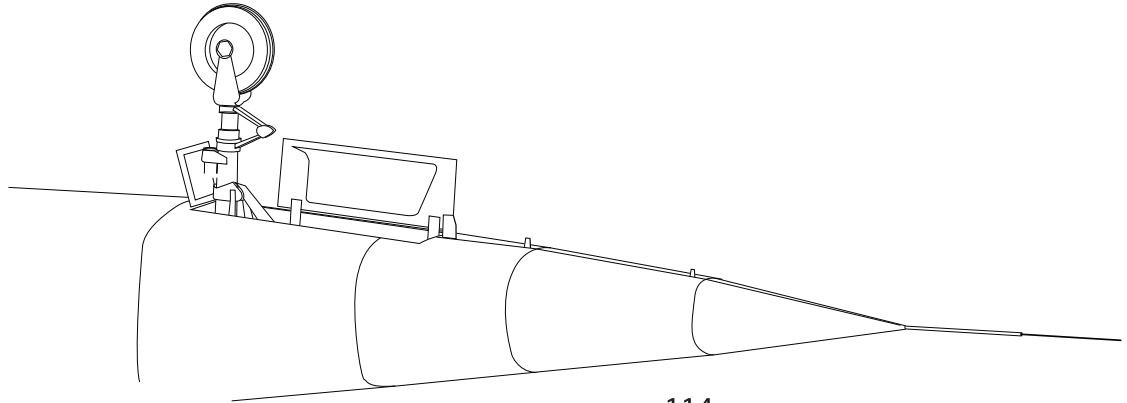
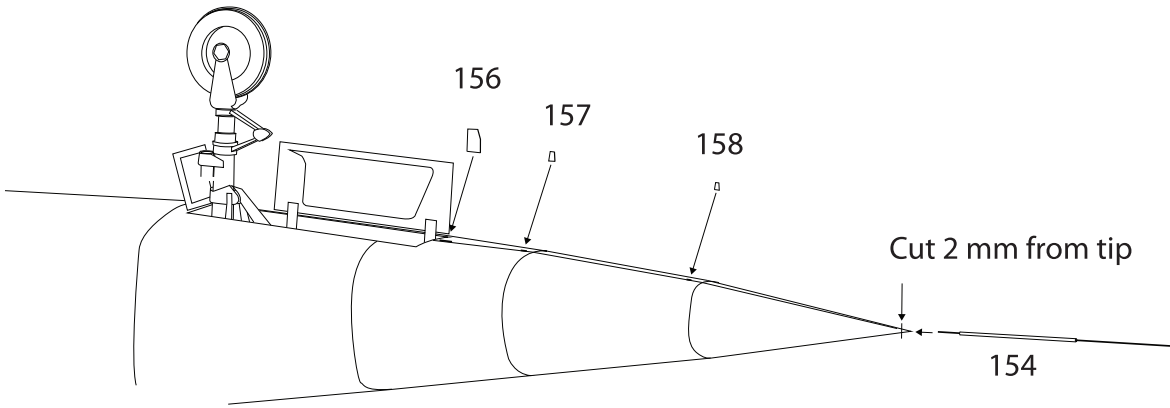
WIRE TEMPLED FOR MAIN LANDING GEAR

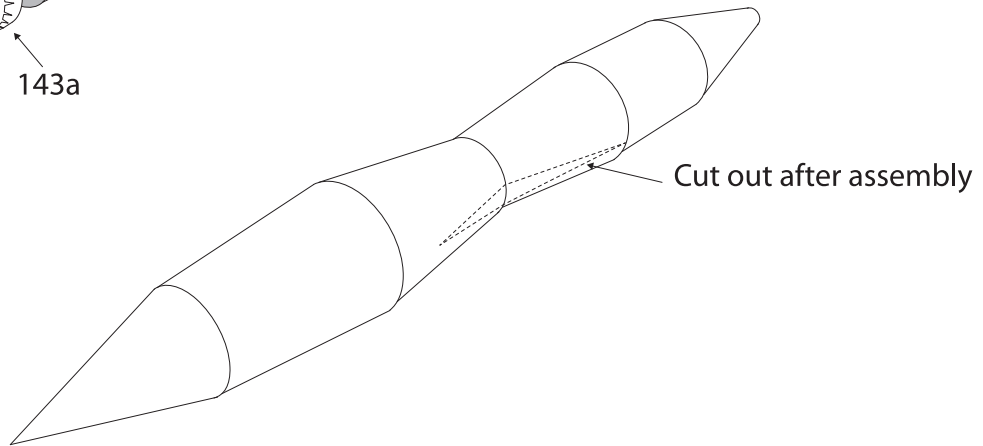
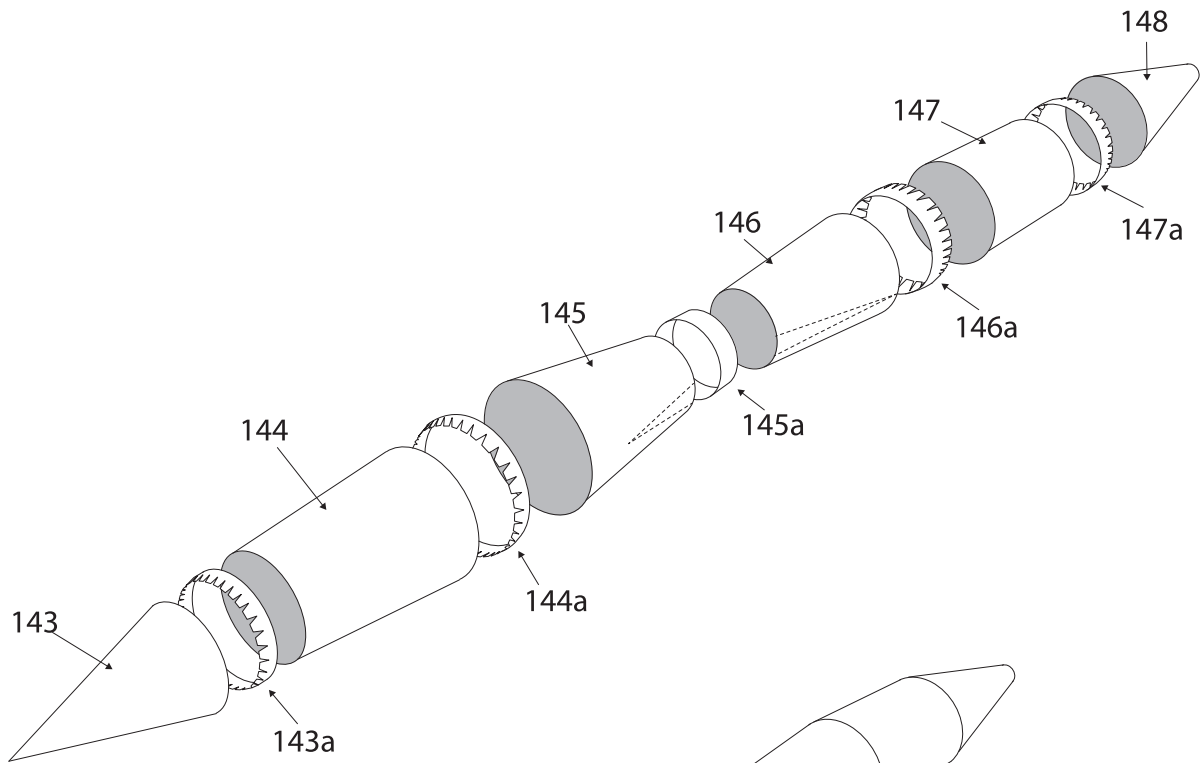
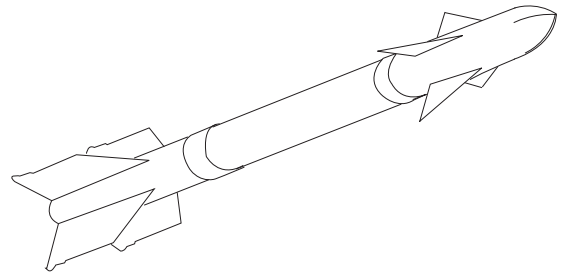
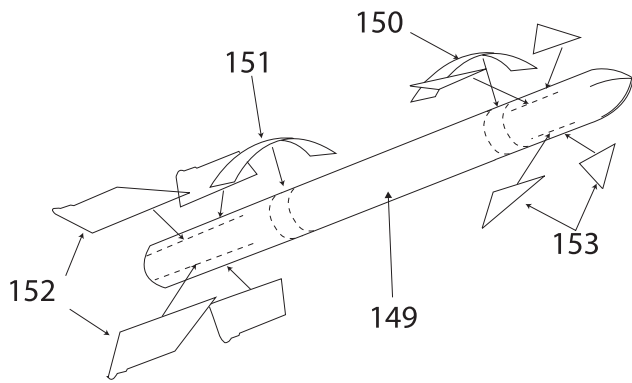


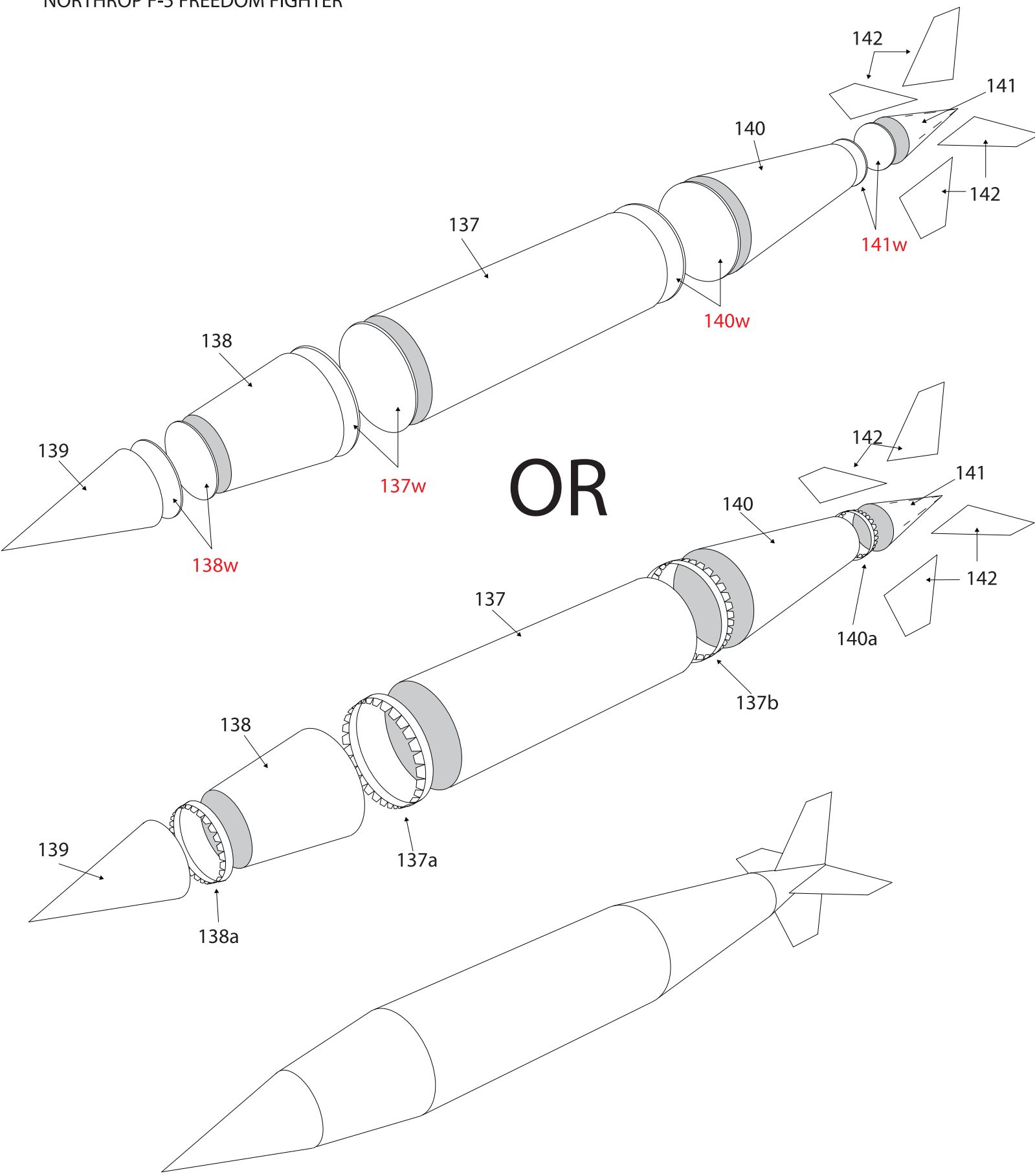


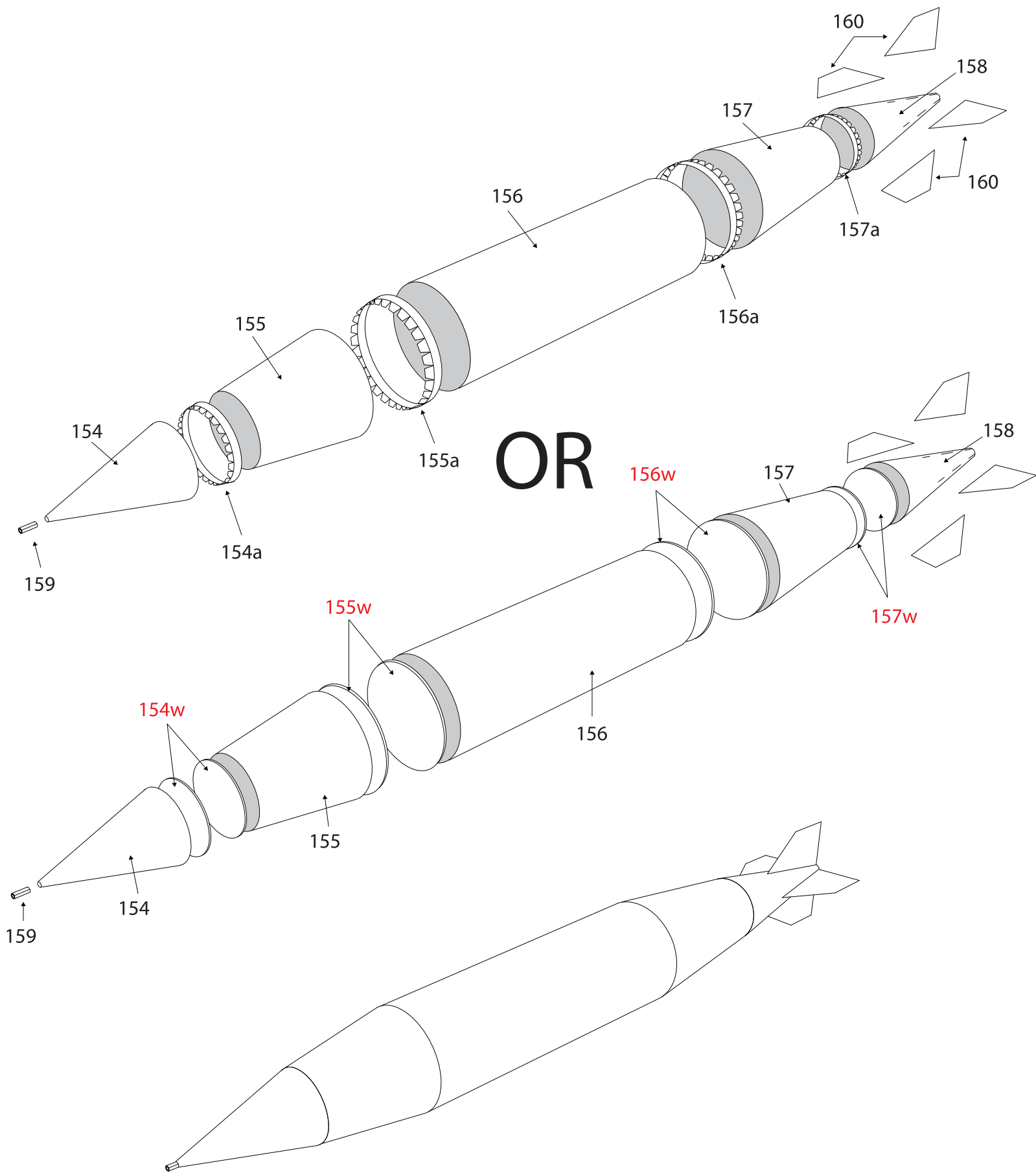


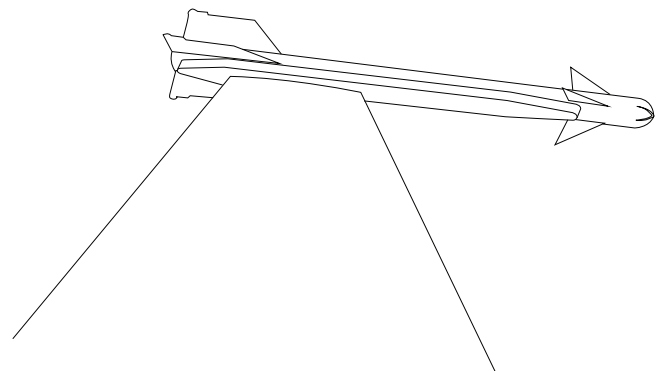
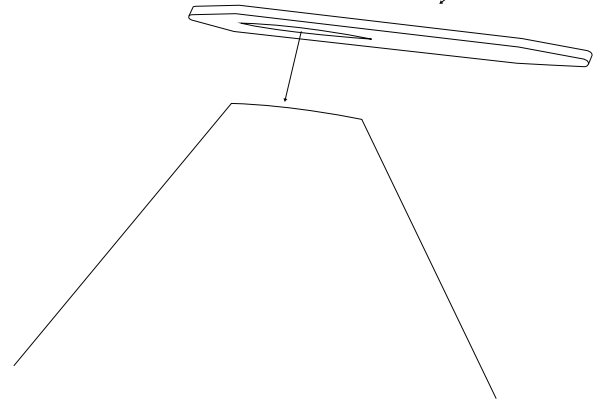
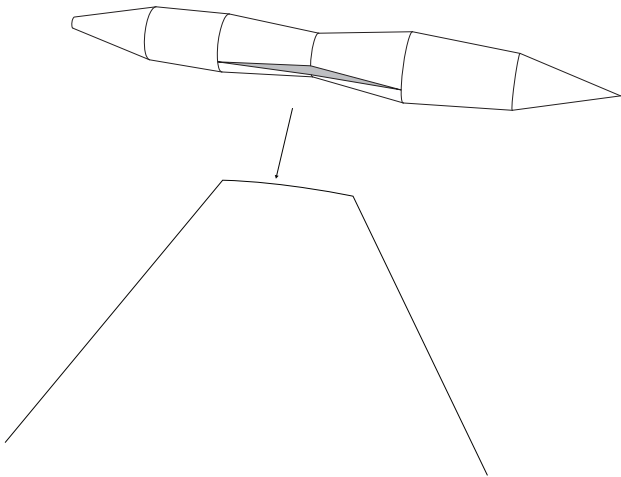
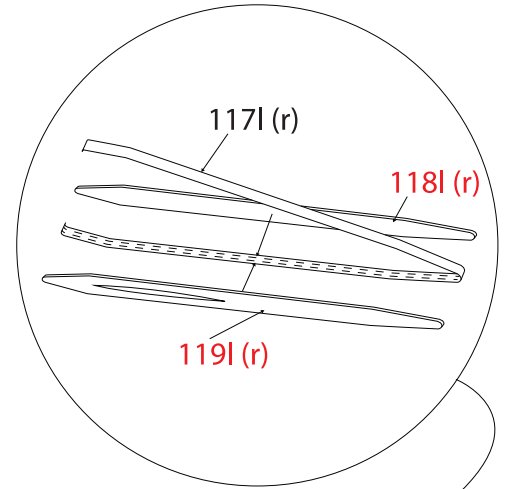
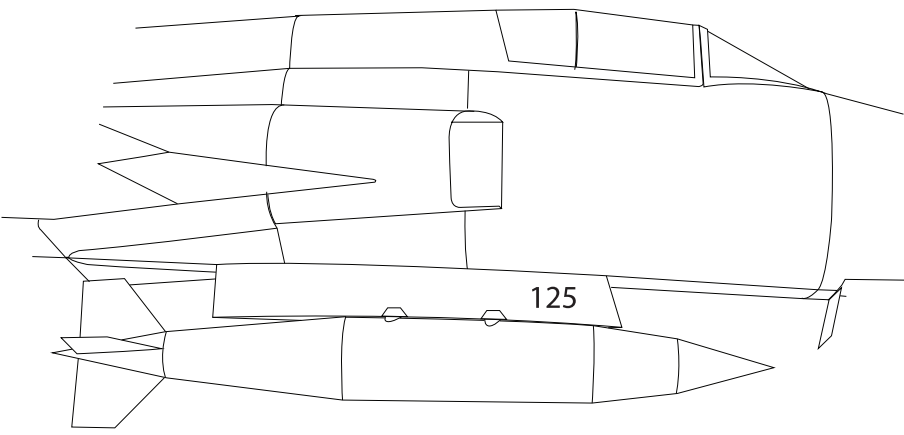












NORTHROP F-5A FREEDOM FIGHTER "The third prototype"

The proposed Northrop F-5A Freedom Fighter is 1:32 scale model of the third prototype of this airplane. It is not very complicated to assemble except some parts of canopy and landing gears.

This model is recommended to less experience models builders.

Study carefully the Assembly Instruction drawings which, in addition to describing assembly process, also show the order in which this model should be assembled.

Follow the sequence given in the instruction.

Try to imagine the shape and purpose of every element. Cut the necessary parts shortly before using them in order to avoid possible mistakes. Shape every part to the exact and perfect fit before using glue.

You also need to assemble some additional materials and tools necessary to print and build this model.

You need:

10 Sheets 8.5/11 100-120 # (lb.) of card stock to print pages 1, 2, 3, 4, 5, 6, 7, 8, 10.

1 Sheet 8.5/11 80-100 # (lb.) of text stock to print page 9.

1 Sheet of transparent foil for an ink jet or laser printers to print page 11.

You also need a minimum 2 sheets 8.5/11 of heavy cardboard with thickness of 0.7-1 mm to reinforce fuselage ribs, wheels, and strengthening elements, a few paper clips or similar wire to reinforce undercarriage, black acrylic paint to finish airplane wheels and good glue.

Beacons 3 in 1 Advanced Craft Glue is very good which is my personal choice, but Weldwood Contact Cement also can be used with good results.

You will also need a following tools:

Very sharp scissors and precision cutting knives to cut out parts

A blunt knife to score fold lines and form the cylindrical parts a ruler and fine sanding paper.

PRINTING:

This model kit can be printed on every computer printer.

Three things however are very important to print it correctly.

1-Every page with a model parts need to be printed in the same scale without scaling them down or up.

2-To avoid color differences every page of this model have to be printed using the same ink cartridge set.

3-Do not rush with printing.

On every page you will find a note on what kind of paper it should be printed on.

Printing of Assembly Instruction is optional.

MODEL ASSEMBLY:

After acquaintance with all assembly instruction drawings in preparation to assembly cut out every part from page 10 and glue them to 1mm cardboard.

Note that every parts of this model which need to be reinforce with cardboard is numbered in red. After this is done you can start building your model starting with the fuselage (pages 1 to 8).

Then ejection seat, instrument panel and canopy (pages 9, 10 and 11).

The next step is airplane tail and wings shown on pages 12, 13 and 14.

Front landing gear is next which assembly with great details is illustrated on page 15.

Page 16 illustrated main landing gear as well as weapon pylons and small detail (part 74).

Canons, placement of antennas and remainder of small parts illustrated page 17.

Way of assembly wings fuel tanks and sidewinder missals is shown on page 18.

On pages 19 and 20 you will find two alternative way of building main external fuel tank (page 19) and Mk 84 bomb (page 20) and finally page 21 illustrated way of assembly wing tip missile rail and placement of external fuel tank as well as Sidewinder missile and wing tip fuel tanks.

PARTS INDEX

- 1.....1/1s/2/2s/3/3s/4/4s/5/5a/5b/6/6s/7/8/11/11a/26/27/27a/102/103/104/105/106/107/
122/122s/123/123s/124
- 2.....9/9s/10/10s/12/12s/13/13s/14/14s/21r/22r/23/21l/22l/23l/40/41/42/43/45/48
- 3.....15/15s/16/16s/17/17s/18/18s/19r/19l/25r/25l/37/38/39/91/92/93/93a/96/97/98/99/
100/101/109r/110r/111r/112r/113r/109l/110l/111l/112l/113l/114r/115r/116r/114l/115l/116l
- 4.....28/29a/29b/30a/30b/31/32/33/34/35/36/37/44e/44es/46/47/49/50/51/51a/51s/52/53/53a/
54/54s/55r/56r/56ra/57r/57s/58r/55l/56l/56la/57l/57s/58l
- 5.....70r/70a/70b/70l/71r/72r/72s/73r/74r/71l/72l/72s/73l/74l/108r/108ra/108l/108la
- 6.....76r/77r/78r/79r/80r/81r/76l/77l/78l/79l/80l/81l/83/85/86r/86l/87/89/90/95/143r/143a/143s/
144r/144a/144s/145r/145a/145s/143l/144l/145l/146l/147l/148l/152/153
- 7.....117r/118r/119r/117l/118l/119l/125/126/127/128/129/130/131/132/133/134/135/136/
137/137a/137w/137b/137s/138/138a/138w/138s/139/139s/140/140s/140a/140w/141/
141s/141w/142
- 8.....20r/20l/37a/37b/38a/38b/39a/40a/40b/41a/41b/42a/42b/43a/43b/44/45b/59rb/59rf/60r/
59lb/59lf/60l/154/154a/154s/154w/155/155a/155s/155w/156/156a/156s/156w
157/157a/157s/157w/158/158b/158s/160
- 9.....75/82/84/88/120/121/149/150/151
- 10....1b/2a/2b/3a/3b/4a/4b/6a/6b/9a/9b/10a/10aa/10b/10bb/12a/12b/13a/13b/14a/14b/15a/15b/
16a/16b/17a/17b/18a/24r/24l
- 11....44
- 12....161/161s/162/163/163s/164/164s/165/166/167/168/169